

Installation / Montage

- DE Einbauanleitung
- GB Installation instructions
- IT Istruzioni di montaggio
- FR Instructions de montage
- NL Montagehandleiding
- ES Instrucciones de montaje
- PT Instruções de montagem
- DK Monteringsvejledning
- SE Monteringsanvisning
- FI Asennusohje
- GR Οδηγίες συναρμολόγησης
- PL Instrukcja montażu
- CZ Montážní návod
- TR Kurulum Talimatları
- RU Инструкция по монтажу
- CN 安装说明
- HU Szerelési útmutató
- JP 設置説明書

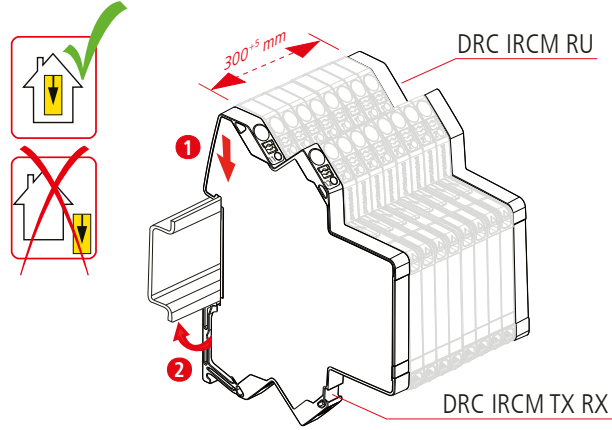
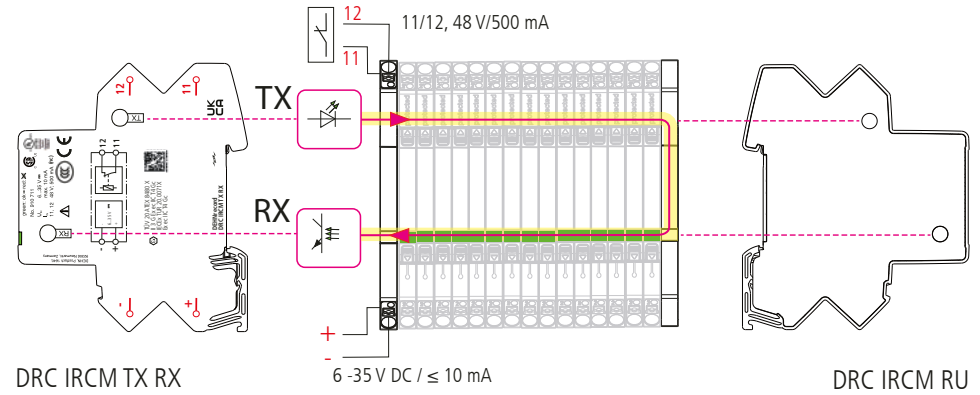
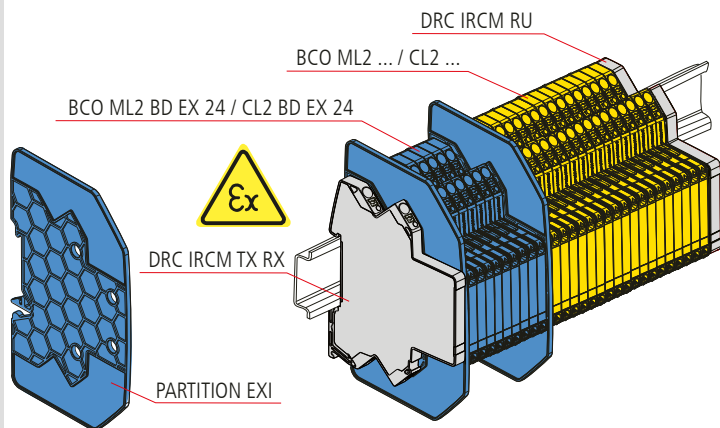
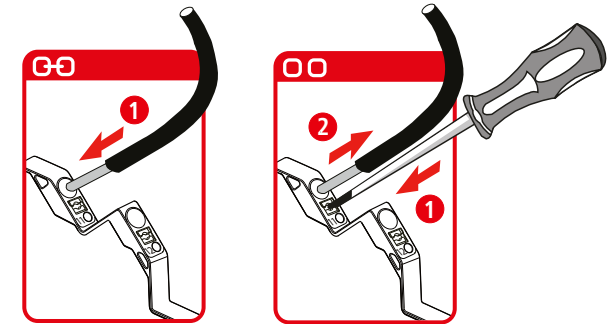
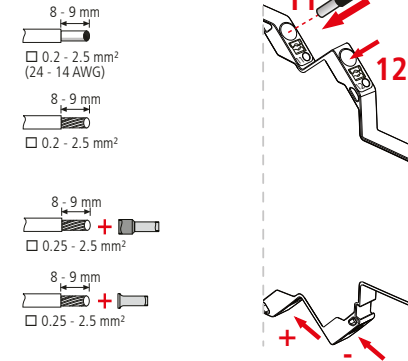
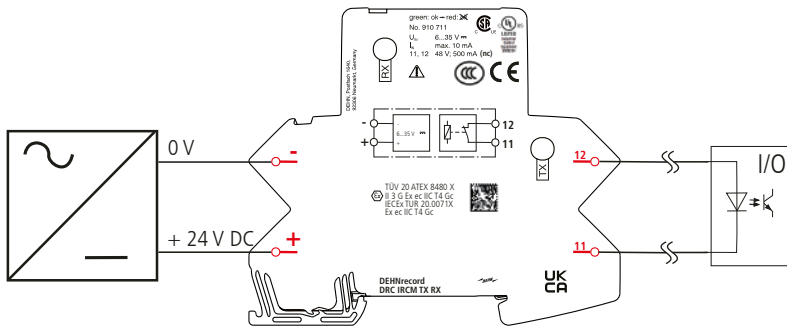


Fig. 2



DRC IRCM TX RX



DEHNrecord DRC IRCM TX RX



BLITZDUCTORconnect BCO MLX ... / BCO CLX ...

fault indication

LED	Terminal	Indicator
	11 12	
	11 12	
	11 12	

UL requirements acc. to UL 61010-1 3rd edition

- 1) **Description of the function (general)**
 DEHNrecord condition monitoring unit, DIN rail mounted set with integrated visual transmitter/receiver as well as visual deflection unit for monitoring the condition of BCO arresters with LifeCheck. Visual status indication via LED group display combined with remote signalling (break contact).
- 2) **Altitude**
 Rated altitude for operation 5000 m
- 3) **The device shall be supplied by limited energy:**
 max. short circuit current 4,2 A @ 35 V DC
 6,2 A @ 24 V DC
- 4) **Remote Contact Rating:**
 Remote Contact DC: 48 V / 6,25 mA or 500 mA / 0,6 V
 AC: 30 V r.m.s. / 10 mA or 500 mA / 0,6 V r.m.s.
 max. 300 mW (AC or DC)

