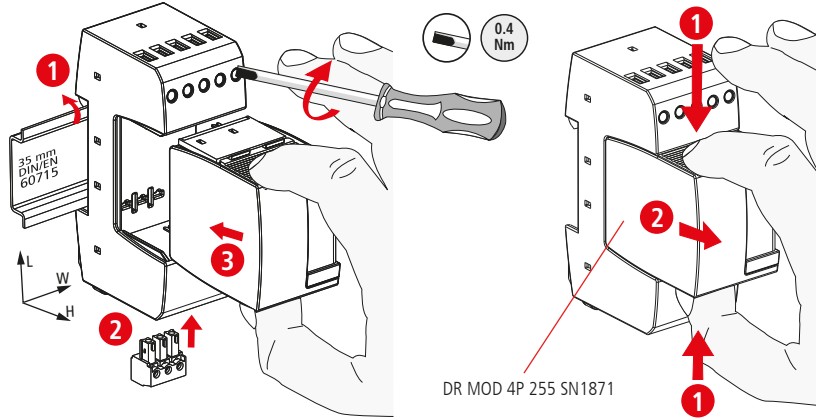


**DEHNrail modular DR M 4P 255 SN1872 FM**

- DE Einbauanleitung
- GB Installation instructions
- IT Istruzioni di montaggio
- FR Instructions de montage
- NL Montagehandleiding
- ES Instrucciones de montaje
- PT Instruções de montagem
- DK Monteringsvejledning
- SE Monteringsanvisning
- FI Asennusohje
- GR Οδηγίες συναρμολόγησης
- PL Instrukcja montażu
- CZ Montážní návod
- TR Kurulum Talimatları
- RU Инструкция по монтажу
- CN 安装说明
- HU Szerelési útmutató
- JP 設置説明書

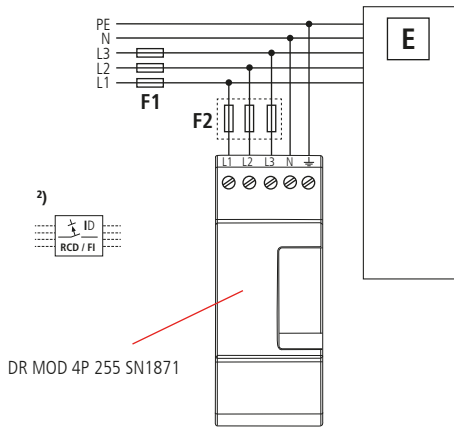
III IEC 61643-11...  
3 EN 61643-11...



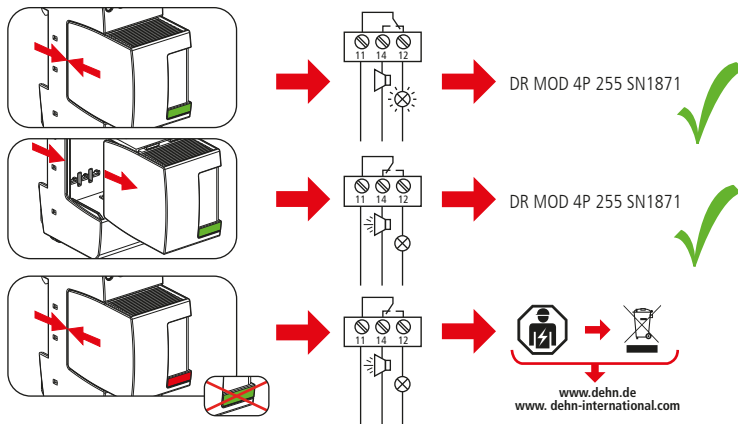
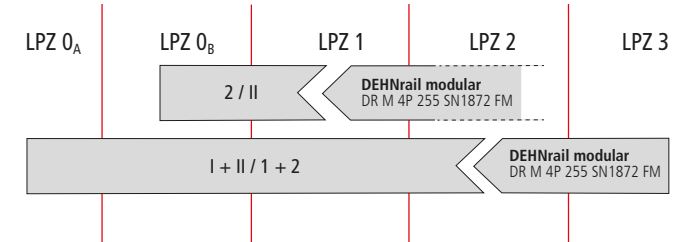
DR M 4P 255 SN1872 FM	
$U_N$ / Tol.: +10%	230 / 400 V (50/60 Hz)
$U_c$	255 / 440 V
max. $I_{sc}$	32 A gG (B 32 A)
$I_{scCR}$	6 kA <sub>rms</sub> (1kA <sub>max</sub> )
$\theta$	-40°C ... + 80°C
$\Phi$	5% ... 95%
$I_{PE}$	< 5 $\mu$ A
IP *)	20
L x W x H	90 mm x 36 mm x 73 mm

min. $\square$ L1, L2, L3, N, $\perp$	0.5 mm <sup>2</sup>	10 mm
max. $\square$ L1, L2, L3, N, $\perp$	2.5 mm <sup>2</sup>	4 mm <sup>2</sup>

**DR M 4P 255 SN1872 FM**



DEHNrail modular DR M 4P 255 SN1872 FM	
F1	F1 > 32 A gG ↓ F2 ≤ 32 A gG
F2	F1 ≤ 32 A gG ↓ <del>F2</del>



DEHNrail modular DR M 4P 255 SN1872 FM	
$U_N$ / $I_N$	AC: 250 V / 0.5 A
	DC: 250 V / 0.1 A 125 V / 0.2 A 75 V / 0.5 A
	max. 1.5 mm <sup>2</sup>

