

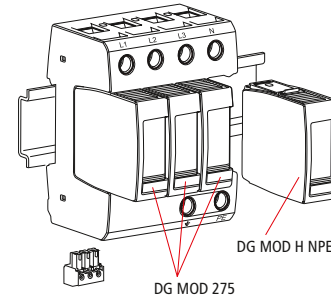
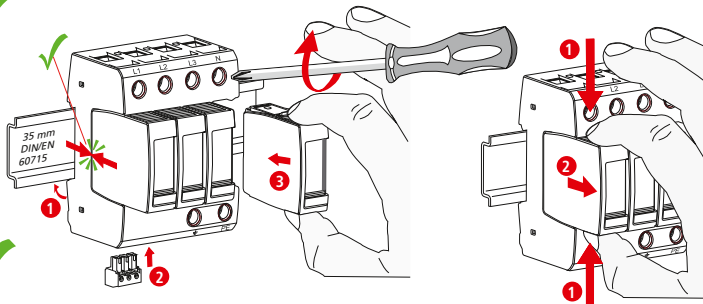
**DEHNguard modular DG M H TT 275 (FM)**

- DE Einbauanleitung
- GB Installation instructions
- IT Istruzioni di montaggio
- FR Instructions de montage
- NL Montagehandleiding
- ES Instrucciones de montaje
- PT Instruções de montagem
- DK Monteringsvejledning
- SE Monteringsanvisning
- FI Asennusohje
- GR Οδηγίες συναρμολόγησης
- PL Instrukcja montażu
- CZ Montážní návod
- TR Kurulum Talimatları
- RU Инструкция по монтажу
- CN 安装说明
- HU Szerelési útmutató
- JP 設置説明書



II IEC 61643-11...  
2 EN 61643-11...

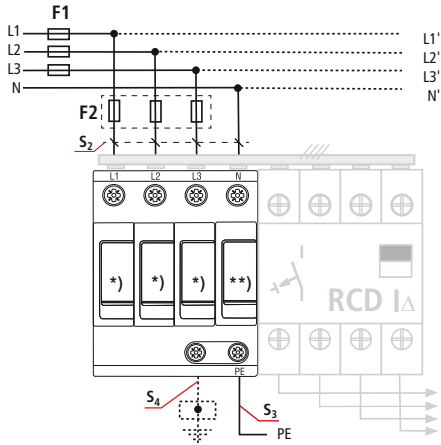
PZ 2 4 Nm



**DG M H TT 275 (FM)**

	L - N	N - PE
	DG MOD 275	DG MOD H NPE
$U_c$	275 V ~	255 V
$U_N$ / Tol.: ±10%	230/400 V	
$f_N$	50 / 60 Hz	
max.	125 A gG	---
$I_{SCCR}$	50 kA <sub>rms</sub>	---
$I_n$	20 kA	80 kA
$I_{max}$	40 kA	120 kA
$I_{fi}$	---	100 A <sub>rms</sub>
$9^\circ$	-40°C ... + 80°C	
$\Phi$	5% ... 95%	
$I_{PE}$	< 0.15 mA	< 5 µA
IP <sup>1)</sup>	20	
L x W x H	90 mm x 54 mm x 73 mm	

**TT DG M H TT 275(FM)**



\*) DG MOD 275  
\*\*) DG MOD H NPE

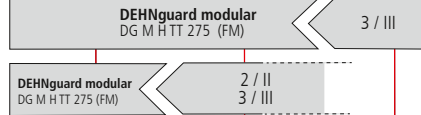
LPZ 0<sub>A</sub>

LPZ 0<sub>B</sub>

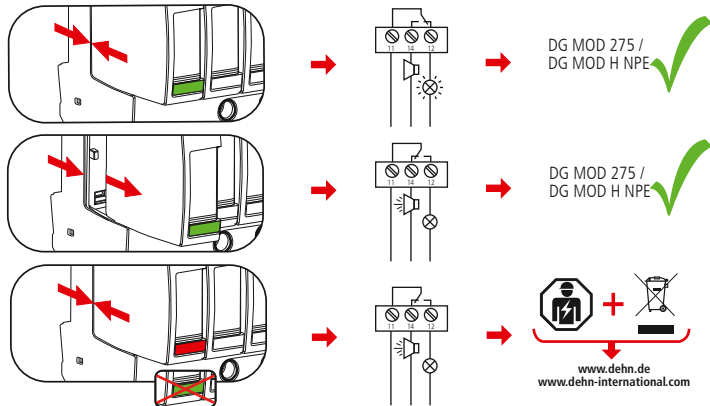
LPZ 1

LPZ 2

LPZ 3



min. $\square$ L, N, PE, $\perp$	1.5 mm <sup>2</sup>		
max. $\square$ L, N, PE, $\perp$	25 mm <sup>2</sup>	35 mm <sup>2</sup>	
$\square$	16 mm <sup>2</sup> Cu	$\geq 15.5$ mm	



**DEHNguard modular DG M H TT 275 (FM)**

	$U_N / I_N$	AC: 250 V / 0.5 A
		DC: 250 V / 0.1 A 125 V / 0.2 A 75 V / 0.5 A
		max. 1.5 mm <sup>2</sup>

**DEHNguard modular DG M H TT 275 (FM)**

	F1 A gG	S <sub>2</sub> / mm <sup>2</sup>	S <sub>3</sub> / mm <sup>2</sup>	S <sub>4</sub> / mm <sup>2</sup>	F2 A gG
F1	F1 ≤ 125 A gG	4	6	6	---
	F1 > 125 A gG	4	6	6	---
F2	F2 ≤ 125 A gG	6	6	6	---
		10	10	10	---
		10	10	10	---
		16	16	16	---
		16	16	16	---
		16	16	16	---
		16	16	16	125

