

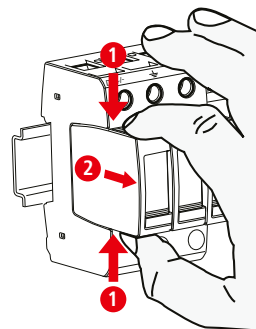
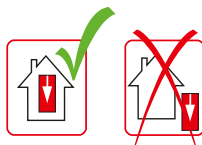
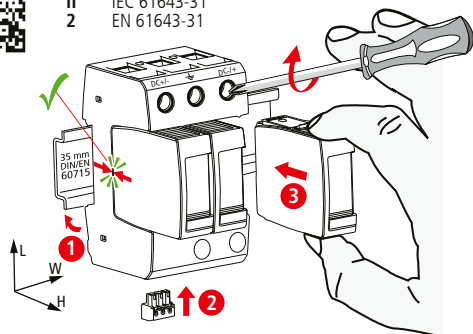
DEHNguard M YPV SCI ... (FM)

- DE Einbauanleitung
- GB Installation instructions
- IT Istruzioni di montaggio
- FR Instructions de montage
- NL Montagehandleiding
- ES Instrucciones de montaje
- PT Instruções de montagem
- DK Monteringsvejledning
- SE Monteringsanvisning
- FI Asennusohje
- GR Οδηγίες συναρμολόγησης
- PL Instrukcja montażu
- CZ Návod k montáži
- TR Montaj kılavuzu
- RU Инструкция по монтажу
- CN 安装说明
- HU Szerelési útmutató
- JP 設置説明書



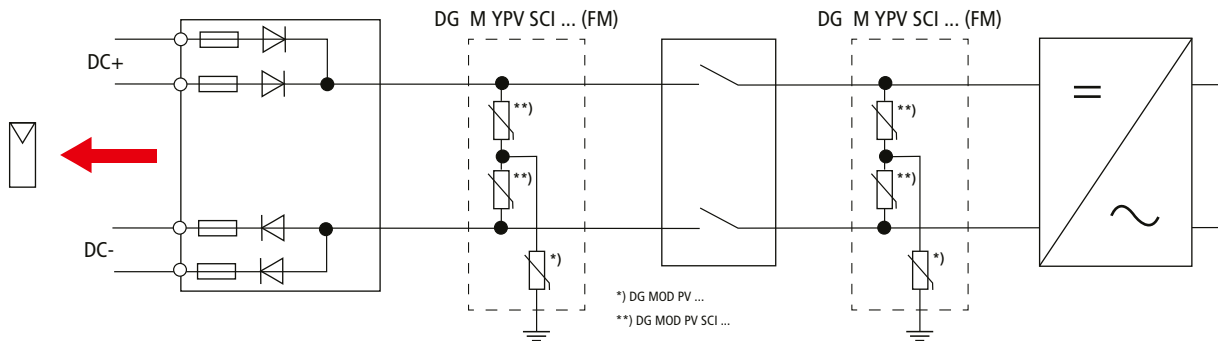
2 EN 50539-11...
II IEC 61643-31
2 EN 61643-31

PZ 2 4 Nm

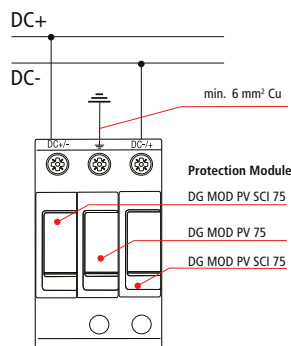


	DG M YPV SCI 150 (FM)	DG M YPV SCI 1000 (FM)	DG M YPV SCI 1200 (FM)
	DG MOD PV SCI 75/ DG MOD PV 75	DG MOD PV SCI 500/ DG MOD PV 500	DG MOD PV SCI 600/ DG MOD PV 600
U_{CPV}	≤ 150 V DC	≤ 1000 V DC	≤ 1200 V DC
I_{total}	40 kA (8/20)		30 kA (8/20)
I_{max}	20 kA (8/20)	25 kA (8/20)	
I_{scpv}		10 kA	
I_{cpv}		≤ 10 μA	
I_{PE_AC}		≤ 500 μA	
I_{PE_DC}		≤ 25 μA	
θ°		-40°C ... +80°C	
ϕ		5% ... 95%	
IP *)		20	
failure behavior Ausfallverhalten		open circuit Abtrennung	
PV system		earthed geerdet	
L x W x H	90 mm x 54 mm x 73 mm		

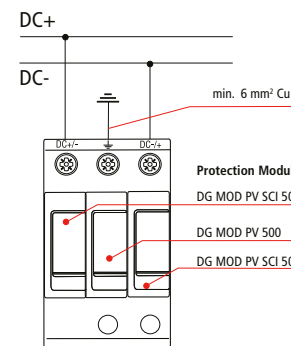
	12 mm	12 mm	12 mm
min. □ DC+ / -, DC- / +, ±	1.5 mm ²		
max. □ DC+ / -, DC- / +, ±	25 mm ²		35 mm ²
□	16 mm ² Cu		≤ 15.5 mm



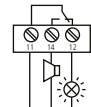
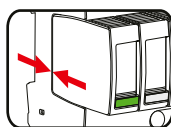
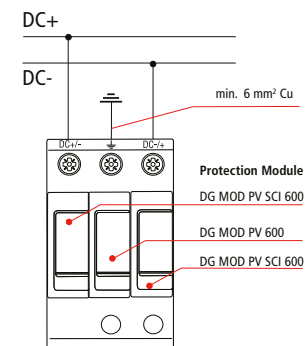
DG M YPV SCI 150 (FM)



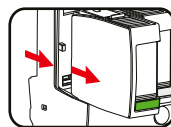
DG M YPV SCI 1000 (FM)



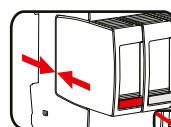
DG M YPV SCI 1200 (FM)



DG MOD PV SCI ...,
DG MOD PV ...



DG MOD PV SCI ...,
DG MOD PV ...



www.dehn.de
www.dehn-international.com

DEHNguard M YPV SCI ... FM DG M YPV SCI ... FM	
	AC: 250 V / 0.5 A
	DC: 250 V / 0.1 A 125 V / 0.2 A 75 V / 0.5 A
	max. 1.5 mm ²

