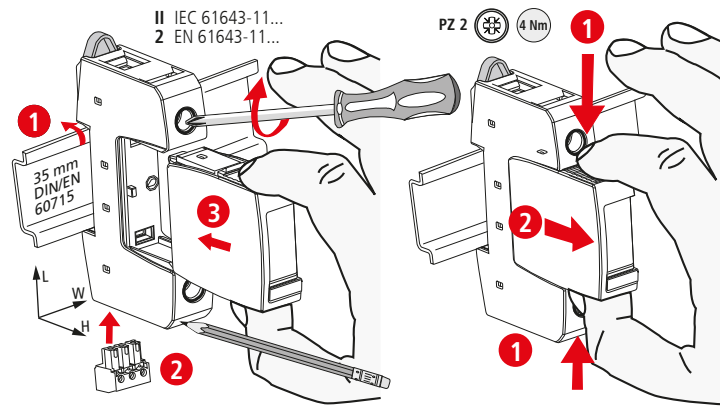
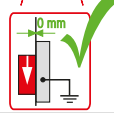


**DEHNguard S DG S ... (FM)**

- DE Einbauanleitung
- GB Installation instructions
- IT Istruzioni di montaggio
- FR Instructions de montage
- NL Montagehandleiding
- ES Instrucciones de montaje
- PT Instruções de montagem
- DK Monteringsvejledning
- SE Monteringsanvisning
- FI Asennusohje
- GR Οδηγίες συναρμολόγησης
- PL Instrukcja montażu
- CZ Návod k montáži
- TR Montaj kılavuzu
- RU Инструкция по монтажу
- CN 安装说明
- HU Szerelési útmutató
- JP 設置説明書



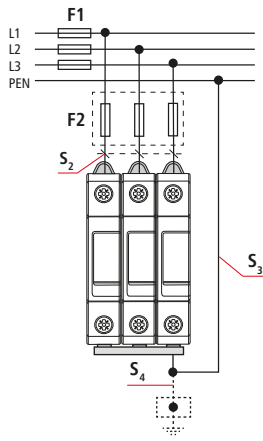
DG S ... (FM)	48	75	150	275	320	385	440	600
U <sub>N</sub> / Tol.: ±10%	42 V	60 V	120 V	230 V	230 V	230 V	400 V	480 V
U <sub>C, AC</sub>	48 V~	75 V~	150 V~	275 V~	320 V~	385 V~	440 V~	600 V~
f <sub>N</sub>	50 / 60 Hz							
max. I <sub>gG</sub>	125 A gG							
I <sub>max</sub>	25 kA	40 kA	40 kA	40 kA	40 kA	40 kA	40 kA	30 kA
I <sub>SCCR</sub>	50 kA <sub>rms</sub>				25 kA <sub>rms</sub>			
g <sup>o</sup>	-40°C ... + 80°C							
φ	5% ... 95%							
I <sub>PE</sub>	< 0.5 mA							
IP 1)	20							
L x W x H	90 mm x 18 mm x 73 mm							

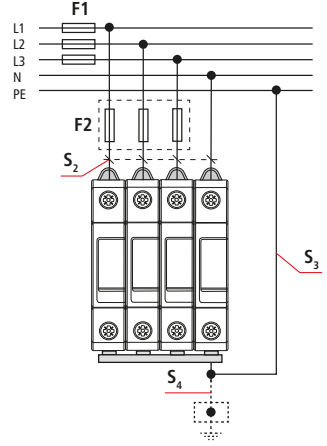
U <sub>C, DC</sub>	60 V -	100 V -	200 V -	350 V -	420 V -	500 V -	585 V -	600 V -
max. I <sub>gG</sub>	80 A gG				80 A gPV			
I <sub>SCCR</sub>	5000 A-							

min. □ L, N, PE	1.5 mm <sup>2</sup>	
max. □ L, N, PE	25 mm <sup>2</sup>	35 mm <sup>2</sup>
□	16 mm <sup>2</sup> Cu	≥15.5 mm

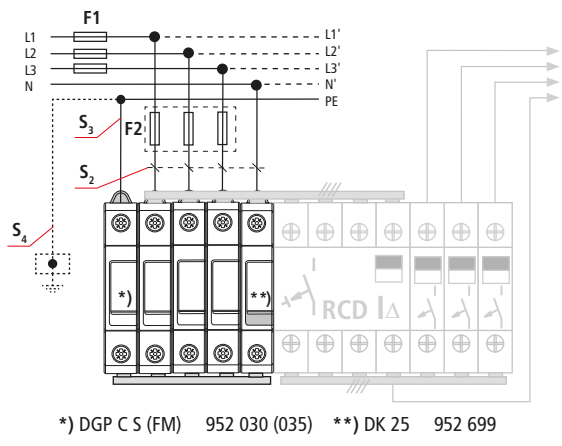
**TN-C**



**TN (-C) -S**



**TT 3+1**

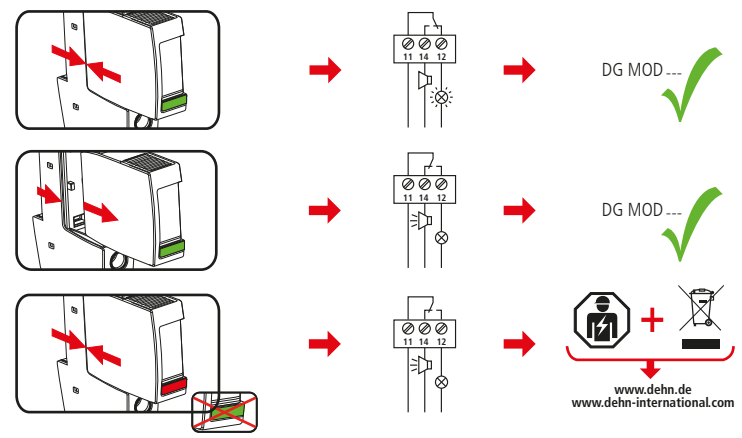
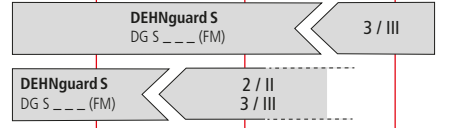


DEHNguard S DG S ... (FM)		
	48, 75, 150, 275, 320, 385, 440	600
F1	F1 > 125 A gG F2 ≤ 125 A gG	F1 > 100 A gG F2 ≤ 100 A gG
F2	F1 ≤ 125 A gG	F1 ≤ 100 A gG

DEHNguard S DG S ... (FM)					
48, 75, 150, 275, 320, 385, 440			600		
A gG	S <sub>2</sub> / mm <sup>2</sup>	S <sub>3</sub> / mm <sup>2</sup>	S <sub>4</sub> / mm <sup>2</sup>	A gG	A gG
25	4	6	6	---	---
35	4	6	6	---	---
40	4	6	6	---	---
50	6	6	6	---	---
63	10	10	10	---	---
80	10	10	10	---	---
100	16	16	16	---	---
>100	16	16	16	---	100
125	16	16	16	---	100
>125	16	16	16	125	100

\*) DGP C S (FM) 952 030 (035) \*\*) DK 25 952 699

LPZ 0<sub>A</sub> | LPZ 0<sub>B</sub> | LPZ 1 | LPZ 2 | LPZ 3



DEHNguard S DG S ... FM	
U <sub>N</sub> / I <sub>N</sub>	AC: 250 V / 0.5 A
	DC: 250 V / 0.1 A 125 V / 0.2 A 75 V / 0.5 A
max. 1.5 mm <sup>2</sup>	

