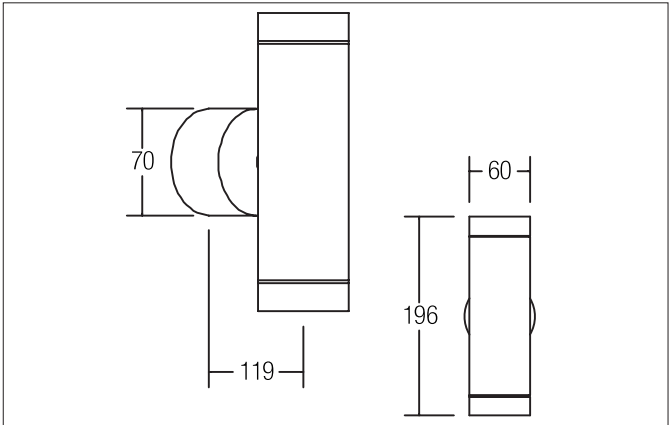




BINTAN Wandanbauleuchte, V4A, direkt / indirekt, für GU10-LED-Retrofit-Lampen, IP44
Article no. 3177



Tender
Surface-mounted wall light, V4A, direct / indirect, for GU10 LED retrofit lamps, IP44, stainless steel matt, round. Compact design for harmonious implementation in harmonious, architectural room concepts. Direct and indirect light emission. Version: GU10, Mounting type: surface-mounted, Mounting location: wall-mounted, Material: stainless steel V4A / glass, Protection rating on room side: to DIN EN 60529: IP44, Protection class: (EN 61140) I, Voltage: 230V AC 50Hz, Power: 10 W, Number of bulbs / sockets: 2, Light color: white, Adjustability: non-adjustable, without control gear, Type of dimming: other.

Article data	
Article no.	3177
GTIN	4250047755302
Series name	BINTAN
Short description	Wandanbauleuchte, V4A, direkt / indirekt, für GU10-LED-Retrofit-Lampen, IP44
Material	Stainless steel
Colour	Stainless steel
Type of surface	Matt
Shape	Round
Outer diameter	60 mm
Weight	1.483 kg
Conformance	CE, UKCA

Lighting technology	
Light colour	White
Light output	Direct/Indirect
Light sharing	Symmetric
Adjustable color temperature	No


BINTAN Wandanbauleuchte, V4A, direkt / indirekt, für GU10-LED-Retrofit-Lampen, IP44

Article no. 3177

Operating technology of the luminaire	
Voltage type	AC
AC nominal voltage max	230 V
Frequency max	50 Hz
Lamp	For LED-retrofill lamp
Lamp holder	GU10
Protection class	I
Degree of protection	IP44
Control	Other
Energy efficiency class	nicht erforderlich

Mounting technology	
Mounting method	Surface mounting
Place of installation	Wall-mounted
Adjustability	Not adjustable
Further references	V4A Outdoor
Material cover	Glass transparent

Packing data	
Gross weight	1.618 kg
Length of packaging	260 mm
Packaging width	170 mm
Packaging height	112 mm
Disposal at end of life	<p>This product must not be disposed of with household waste. You are obliged, to dispose of such electrical waste separately.</p> <p>By disposing of electrical waste and other old or defective electronics separately, you support recycling or other forms of re-use. In that way you help to take care and to avoid that harmful substances get into the environment.</p>