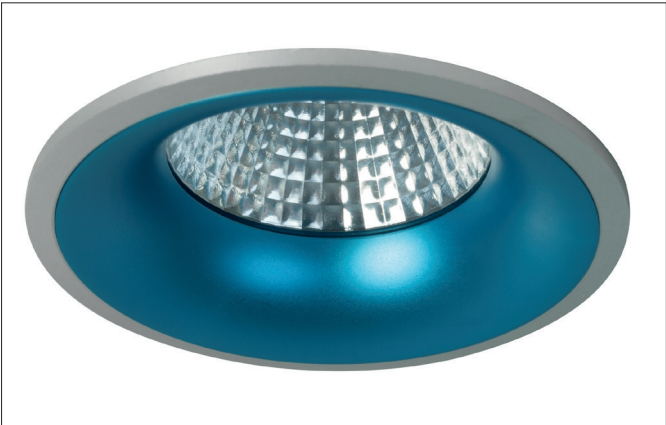


LED recessed downlight
Article no. 12351253



Tender

LED recessed downlight, Round. Ceiling cut-out Ø 70 mm, Installation depth 60 mm, Outer diameter 78 mm, Weight 0,283 kg, with rotati-onssymmetrical, deep, wide distributed light intensity. Cover glass transparent. Luminous flux 540 lm, Power 1 x 8 W, Light colour warm white, Correlated color temprature (CCT) 2.700 K, Colour rendering index CRI > 80, Housing material: Aluminium, Colour: Multi-coloured, Permissible ambient temperature (ta): -20 °C - +25 °C, Protection class (EN 61140): III, Degree of protection (DIN EN 60529): IP20. For connection to an external driver, which is not included in the scope of delivery of the luminaire. Depending on driver dimmable.

Article data	
Article no.	12351253
GTIN	4250047794318
Short description	LED recessed downlight
Material	Aluminium
Colour	Multi-coloured
Type of surface	Matt
Shape	Round
Outer diameter	78 mm
Built-in diameter	70 mm
Installation depth	60 mm
Weight	0.283 kg
Conformance	CE, UKCA

LED recessed downlight

Article no. 12351253

Lighting technology	
Colour temperature	2.700 K
Light colour	White
Light output	Direct
Luminous flux	540 lm
System efficiency	68 lm/W
Colour rendering	CRI > 80
Reflector	High-gloss
Beam angle	38°
Light sharing	Symmetric
Adjustable color temperature	No

Operating technology of the luminaire	
System output	8 W
Voltage type	DC
Current	350 mA
Lamp	LED
Lamp holder	Plug&Play
Protection class	III
Degree of protection	IP20
Control	Depending on driver
Energy efficiency class	nicht erforderlich

Mounting technology	
Mounting method	Recessed mounting
Place of installation	Ceiling-mounted
Adjustability	Not adjustable
Further references	No cover with thermal insulation material
Material cover	Glass transparent

Packing data	
Gross weight	0.323 kg
Length of packaging	100 mm
Packaging width	100 mm
Packaging height	110 mm
Disposal at end of life	<p>This product must not be disposed of with household waste. You are obliged, to dispose of such electrical waste separately.</p> <p>By disposing of electrical waste and other old or defective electronics separately, you support recycling or other forms of re-use. In that way you help to take care and to avoid that harmful substances get into the environment.</p>