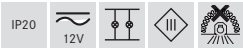
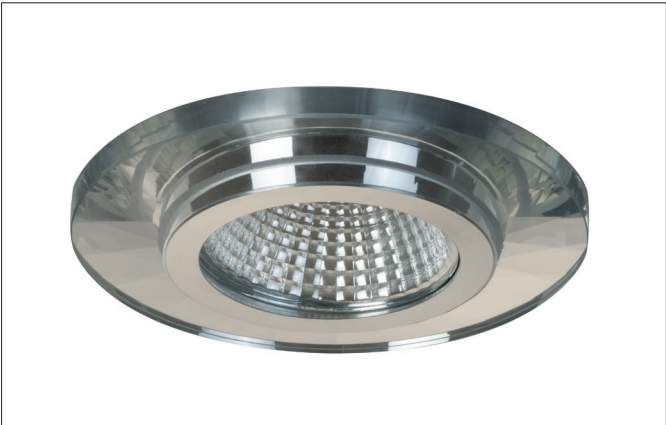


**Recessed ceiling spot**  
Article no. 02300007



Tender	
Recessed ceiling light, round. Designed in a compact design for tool-free quick installation for recessed ceiling mounting. Version: GX5.3, Mounting type: Recessed mounting, Mounting location: Ceiling mounting, Material: Aluminum, Protection rating on room side: to DIN EN 60529: IP20, Protection class: (EN 61140) III, Voltage: 12V, Power: 35 W, Number of bulbs / sockets: 1 piece, Adjustability: Non-adjustable, without control gear, Type of dimming: Dependent on control gear.	

Article data	
Article no.	02300007
GTIN	4251433901198
Short description	Recessed ceiling spot
Material	Aluminium
Colour	Alu
Type of surface	Glossy
Shape	Round
Outer diameter	94 mm
Built-in diameter	68 mm
Installation depth	60 mm
Hight	10 mm
Weight	0.131 kg
Conformance	CE, UKCA

**Recessed ceiling spot**

Article no. 02300007

Operating technology of the luminaire	
System output	35 W
Voltage type	AC/DC
AC nominal voltage max	12 V
Frequency max	50 Hz
Lamp	For LED-retrofill lamp
Lamp holder	GX5.3
Protection class	III
Degree of protection	IP20
Control	Depending on driver
Energy efficiency class	nicht erforderlich

Mounting technology	
Mounting method	Recessed mounting
Place of installation	Ceiling-mounted
Adjustability	Not adjustable
Further references	No cover with thermal insulation material
Material cover	Glass structured

Packing data	
Gross weight	0.145 kg
Length of packaging	110 mm
Packaging width	110 mm
Packaging height	40 mm
Disposal at end of life	<p>This product must not be disposed of with household waste. You are obliged, to dispose of such electrical waste separately.</p> <p>By disposing of electrical waste and other old or defective electronics separately, you support recycling or other forms of re-use. In that way you help to take care and to avoid that harmful substances get into the environment.</p>

Compatible LED-modu-							
Article no.	Power	Beam angle	Colour temperature	Colour rendering	Luminous flux	Input	Hight LED-Modul
12925003	3 W	38°	2.700 K	CRI > 80	290 lm	350 mA	40 mm