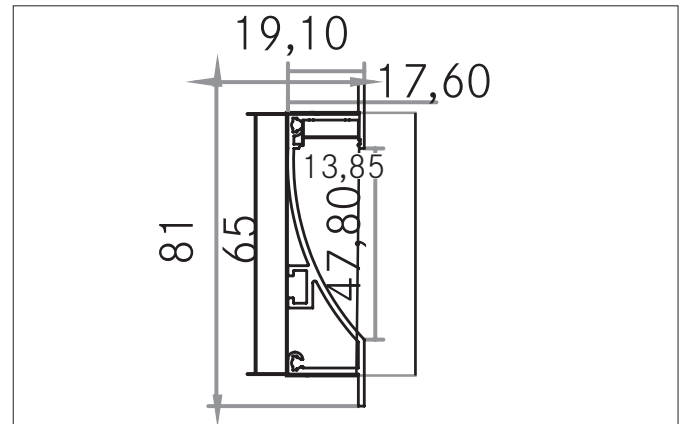


P32-12 Wall recessed profile

Article no. 73650260


Tender

Wall recessed profile, alu anodized. For optimal attachment of the profile this holders are suitable 53032000 53032020. For connecting of two profiles is the connector 53030000 optimal suited. With the use of profile covers 73440000 73440070 73440080 the additional mechanical protection and optimal light distribution can be achieved. The associated end cap set is under 53068260 available. Mounting method: Recessed profile, Material: Aluminium, dimensions profile: length: 100 mm x width: 19,1 mm x height: 81 mm

Product Benefits

- Especially suitable for wall, niche and corridor lighting.
- Up to 6 meters in one piece. (For deliveries beyond 2000 mm: please ask for delivery costs separately).
- Direct floor lighting due to 45° angle.
- Covers on roll, up to 80 meters in one piece.
- Designed for installation in plasterboard.

Article data	
Article no.	73650260
GTIN	4251433913689
Series name	P32-12
Short description	Wall recessed profile
Material	Aluminium
Colour	Alu
Length	100 mm
Width	19.1 mm
Height	81 mm
Weight	0.039 kg
Conformance	CE, UKCA

P32-12 Wall recessed profile
Article no. 73650260

Packing data	
Gross weight	0.06 kg
Length of packaging	2,020 mm
Packaging width	80 mm
Packaging hight	40 mm
Note	Please note that the materials aluminium and PMMA or PC can expand differently with changes in temperature! At a temperature change of 10°C, the coefficient of expansion is approx. aluminium is approx. 0.7mm per metre, for plastic approx. 1.5mm per metre. This is not a defect in the product, this is a normal physical process. physical process.
Disposal at end of life	This product must not be disposed of with household waste. You are obliged, to dispose of such electrical waste separately. By disposing of electrical waste and other old or defective electronics separately, you support recycling or other forms of re-use. In that way you help to take care and to avoid that harmful substances get into the environment.