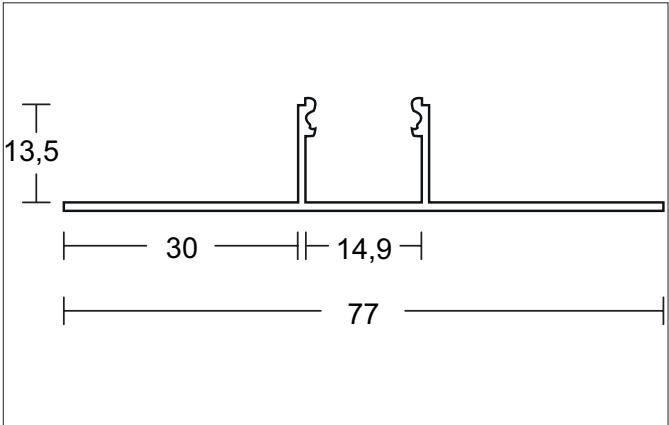


DRY WALL Dry installation profile
Article no. 53773260



Tender	
LED dry recessed profile, centrally arranged, 2,000 mm, anodized aluminium. In conjunction with the profile covers 53450000 53450070 53449080, both additional mechanical protection and optimum light distribution can be achieved. The corresponding end cap set is available at 53100260. Mounting type: Surface-mounted, Material: Aluminum, Profile dimensions: L: 2,000 mm x W: 77 mm x H: 10 mm	

- Product Benefits**
- Perfect solution for holistic lighting concepts in modern drywall construction.
 - Drywall profile center for a seamless mounting option between two plasterboards.
 - Flush finish of the gypsum board after filling and plastering.
 - Sustainable, indirect LED lighting.
 - Matching end pieces available as separate accessories.
 - Up to 3 meters in one piece.

Article data	
Article no.	53773260
GTIN	4251433953517
Series name	DRY WALL
Short description	Dry installation profile
Material	Aluminium
Colour	Alu
Length	2,000 mm
Width	77 mm
Hight	10 mm
Weight	0.648 kg
Conformance	CE, UKCA

DRY WALL Dry installation profile

Article no. 53773260

Packing data	
Gross weight	1.525 kg
Length of packaging	105 mm
Packaging width	105 mm
Packaging height	2,050 mm
Note	Please note that the materials aluminium and PMMA or PC can expand differently with changes in temperature! At a temperature change of 10°C, the coefficient of expansion is approx. aluminium is approx. 0.7mm per metre, for plastic approx. 1.5mm per metre. This is not a defect in the product, this is a normal physical process.
Disposal at end of life	This product must not be disposed of with household waste. You are obliged, to dispose of such electrical waste separately. By disposing of electrical waste and other old or defective electronics separately, you support recycling or other forms of re-use. In that way you help to take care and to avoid that harmful substances get into the environment.

Optional accessories	
Article no.: 53449080 Plaster protection	
Dimensions: 5,000 mm x 14.23 mm x 11.26 mm https://www.brumberg.com/fileadmin/products/Datenblatt_53449080_2021_DE.pdf	