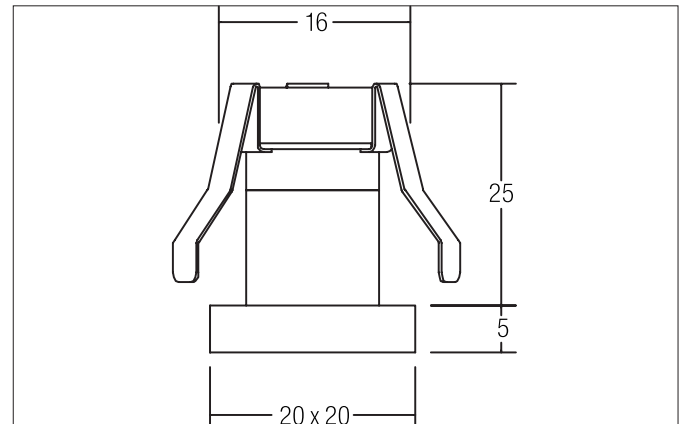


**LED light point, IP44**

Article no. 12118023


**Tender**

LED light point, IP44, chrome, square. Designed in a compact design for tool-free quick installation for recessed ceiling mounting. Version: without socket, Mounting type: recessed mounting, Mounting location: ceiling mounting, Material: aluminum / plastic, Protection rating on room side: to DIN EN 60529: IP44\*, Protection class: (EN 61140) III, Voltage: 12V, Power: 1 W, Number of bulbs / sockets: 1 piece, Luminous flux: 60 lm, Colour temperature: 3,000 K, Light color: white, Beam angle: 34°, Type of dimming: Dependent on control gear.

Article data	
Article no.	12118023
GTIN	4251433922971
Short description	LED light point, IP44
Material	Aluminium
Colour	Chrome
Shape	Square
Length	20 mm
Width	20 mm
Built-in diameter	16 mm
Installation depth	25 mm
Scope of delivery	Including 5,000 mm connecting cable
Weight	0.128 kg
Conformance	CE, UKCA

**LED light point, IP44**

Article no. 12118023

Lighting technology	
Colour temperature	3.000 K
Light colour	White
Luminous flux	60 lm
Colour rendering	CRI > 80
Beam angle	34°
Adjustable color temperature	No

Operating technology of the luminaire	
Current	350 mA
Lamp	LED
Lamp holder	Without fitting
Protection class	III
Protection class on the ceiling side	IP20
Degree of protection	IP44
Control	Depending on driver
Bulb change possible	The light source of this luminaire may only be replaced by the manufacturer or a service technician commissioned by him or a similarly qualified person.
Energy efficiency class	nicht erforderlich

Mounting technology	
Mounting method	Recessed mounting
Place of installation	Ceiling-mounted
Adjustability	Not adjustable
Further references	No cover with thermal insulation material

Packing data	
Gross weight	0.168 kg
Length of packaging	100 mm
Packaging width	90 mm
Packaging height	55 mm
Disposal at end of life	<p>This product must not be disposed of with household waste. You are obliged, to dispose of such electrical waste separately.</p> <p>By disposing of electrical waste and other old or defective electronics separately, you support recycling or other forms of re-use. In that way you help to take care and to avoid that harmful substances get into the environment.</p>

Required accessories	
Article no.: 3506 LED power supply 12 V DC, 1-10 V dimmable (analog) Power: 0 - 20 W Dimensions: 145 mm x 55 mm x 19 mm <a href="https://www.brumberg.com/fileadmin/products/Datenblatt_00003506_2021_DE.pdf">https://www.brumberg.com/fileadmin/products/Datenblatt_00003506_2021_DE.pdf</a>	