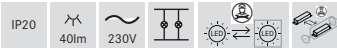
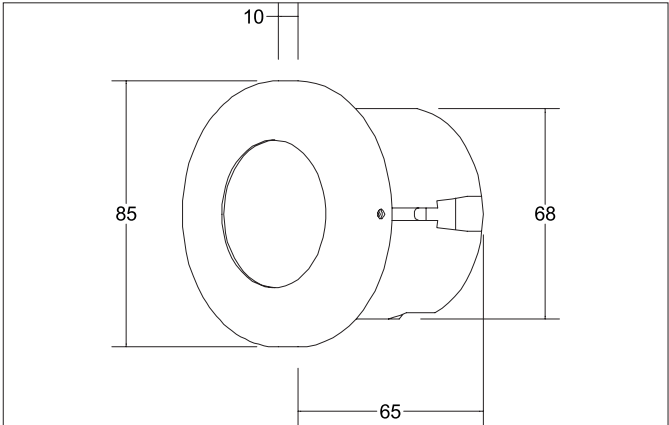
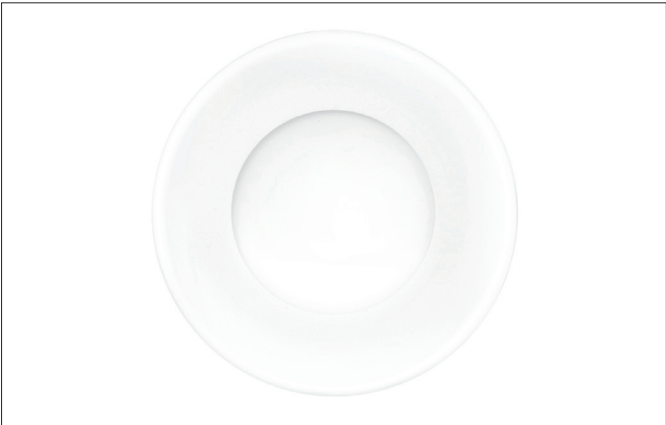


TEDO-R LED wall recessed light
Article no. R3941WW



Tender
Round LED recessed wall light set, switchable, ceiling cut-out Ø 68 mm, installation depth 65 mm, outer diameter 85 mm, weight 0.236 kg, with rotationally symmetrical narrow-wide beam light distribution. Opal plastic cover, rated luminous flux 40 lm, rated wattage 1 x 1.2 W, warm white light color, most similar color temperature (CCT) 3,000 K, general color rendering index CRI > 80, housing material: stainless steel, color: textured white, permissible ambient temperature (ta): -20 °C - +25 °C, protection class (EN 61140): I, degree of protection (DIN EN 60529): IP20. With electronic control gear, switchable.

Article data	
Article no.	R3941WW
GTIN	4250047758327
Series name	TEDO-R
Short description	LED wall recessed light
Material	Stainless steel
Colour	White
Type of surface	Structure
Shape	Round
Outer diameter	85 mm
Built-in diameter	68 mm
Installation depth	65 mm
Hight	10 mm
Weight	0.236 kg
Conformance	CE, UKCA

TEDO-R LED wall recessed light

Article no. R3941WW

Lighting technology	
Colour temperature	3.000 K
Light colour	White
Luminous flux	40 lm
System efficiency	33 lm/W
Colour rendering	CRI > 80
Reflector	Without
Light sharing	Symmetric
Adjustable color temperature	No

Operating technology of the luminaire	
System output	1.2 W
Voltage type	AC
AC nominal voltage max	230 V
Frequency max	50 Hz
Lamp	LED
Lamp holder	Without fitting
Protection class	I
Degree of protection	IP20
Dimmable	No
Control	on/off
Bulb change possible	The light source of this luminaire may only be replaced by the manufacturer or a service technician commissioned by him or a similarly qualified person.

Mounting technology	
Mounting method	Recessed mounting
Place of installation	Wall-mounted
Adjustability	Not adjustable
Material cover	Plastic, opal

Packing data	
Gross weight	0.265 kg
Length of packaging	95 mm
Packaging width	75 mm
Packaging height	95 mm
Disposal at end of life	<p>This product must not be disposed of with household waste. You are obliged, to dispose of such electrical waste separately.</p> <p>By disposing of electrical waste and other old or defective electronics separately, you support recycling or other forms of re-use. In that way you help to take care and to avoid that harmful substances get into the environment.</p>