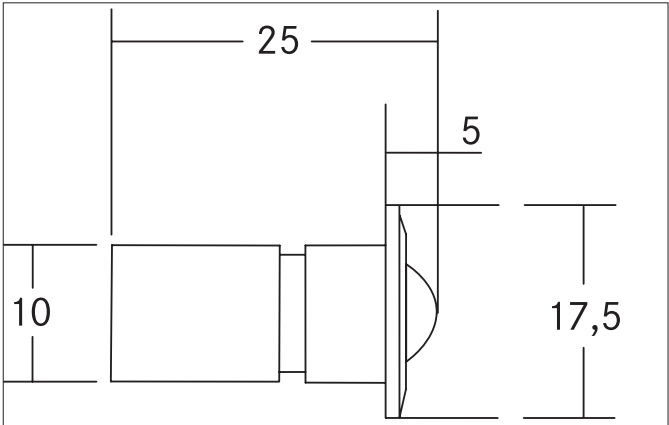


FIBATEC Glass ball exit element, for fiber S2 and S2M
Article no. 9730.05

Light.
For Generations.



Tender	
Glass ball exit element, for fiber S2 and S2M, shiny gold.Material: brass / glass, outer diameter: Ø 17.5 mm, height without glass ball: 1.5 mm, height with glass ball: 5 mm, installation depth without fiber: 20 mm, installation depth with fiber: 100 mm, Drill diameter: Ø 10 mm, fastening type: glue (using Brumberg adhesive 48290000) .	

Article data	
Article no.	9730.05
GTIN	4250047719465
Series name	FIBATEC
Short description	Glass ball exit element, for fiber S2 and S2M
Material	Brass
Colour	Gold
Shape	Round
Weight	0.009 kg
Conformance	CE, UKCA

Packing data	
Gross weight	0.024 kg
Length of packaging	70 mm
Packaging width	47 mm
Packaging hight	81 mm
Disposal at end of life	This product must not be disposed of with household waste. You are obliged, to dispose of such electrical waste separately. By disposing of electrical waste and other old or defective electronics separately, you support recycling or other forms of re-use. In that way you help to take care and to avoid that harmful substances get into the environment.