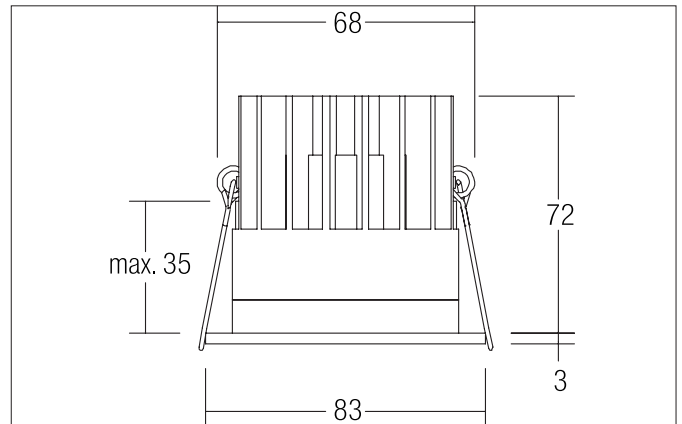
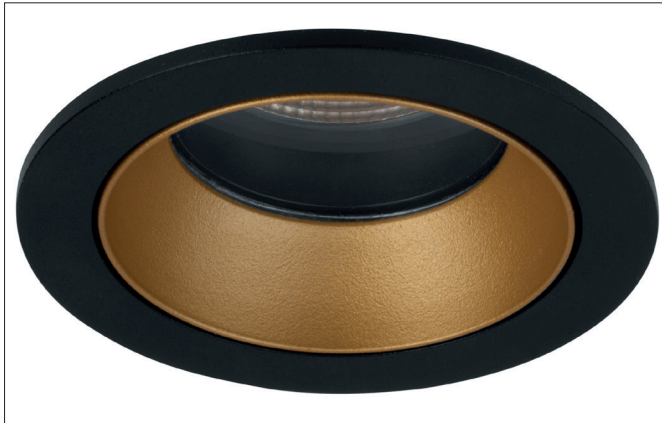



ALTERO-R LED recessed downlight, TunableWhite, IP44

Article no. 12035854TW


Tender

Round LED recessed downlight, TunableWhite, IP44, tool-free ceiling installation using installation springs. Ceiling cut-out Ø 68 mm, installation depth 72 mm, outer diameter 83 mm, weight 0.241 kg, silver reflector with rotationally symmetrical deep-wide beam light distribution. Cover glass transparent, rated luminous flux 610 lm, rated wattage 1 x 9 W, light color warm white to daylight white, most similar color temperature (CCT) 2,700 - 6,500 K, general color rendering index CRI > 90, housing material: aluminum / glass / plastic, color: black structure / gold structure, permissible ambient temperature (ta): -20 °C - +25 °C, protection class (EN 61140): III, degree of protection (DIN EN 60529): IP44. For connection to an external control gear, which is not included with the luminaire. Dimmable depending on the control gear.

Product Benefits

- Modular aufgebaute Produktserie mit hoher Farbvarianz.
- Für flexible Beleuchtungslösungen bei veränderlichen Raumkonzepten von neutral bis akzentuiert.
- Lieferbar in den Farbtemperaturen 3.000 K und 4.000 K und dim2warm (3.000 K - 1.800 K), TunableWhite (2.700 K - 6.500 K) und 2.700 K.
- Standard-Deckenausschnitt 68 mm.
- Vertiefter Lichtaustritt.
- Schutzart IP44 bei Einbau in geschlossenen Decken.
- Ebenfalls lieferbar in quadratischer Ausführung.


ALTERO-R LED recessed downlight, TunableWhite, IP44

Article no. 12035854TW

Article data	
Article no.	12035854TW
GTIN	4251433981893
Series name	ALTERO-R
Short description	LED recessed downlight, TunableWhite, IP44
Material	Aluminium / Glass / Plastic
Colour	black structure / gold structure
Type of surface	Structure
Shape	Round
Outer diameter	83 mm
Built-in diameter	68 mm
Installation depth	72 mm
Hight	3 mm
Weight	0.241 kg
Conformance	CE, UKCA

Lighting technology	
Colour temperature	2.700 K - 6.500 K
Light colour	white
Color Temperature 1	2,700 K
Color Temperature 2	6,500 K
Light output	Direct
Luminous flux	610 lm
Luminous flux 1	510 lm
Luminous flux 2	610 lm
System efficiency	68 lm/W
Colour rendering	CRI > 90
Reflector	Faceted
Reflector colour	silver
Beam angle	33°
Light sharing	Symmetric
Adjustable color temperature	Infinite control

Operating technology of the luminaire	
Voltage type	DC
Current	500 mA
Lamp	LED
Protection class	III
Protection class on the ceiling side	IP20
Degree of protection	IP44
Dimmable	Depending on type of control gear
Control	Depending on driver
Bulb change possible	The light source of this luminaire may only be replaced by the manufacturer or a service technician commissioned by him or a similarly qualified person.
Energy efficiency class	nicht erforderlich

Mounting technology	
Mounting method	Recessed mounting
Place of installation	Ceiling-mounted
Adjustability	Not adjustable
Max. ceiling thickness	35 mm
Further references	No cover with thermal insulation material
Material cover	Glass transparent


ALTERO-R LED recessed downlight, TunableWhite, IP44

Article no. 12035854TW

Packing data	
Gross weight	0.291 kg
Length of packaging	100 mm
Packaging width	100 mm
Packaging height	100 mm
Disposal at end of life	<p>This product must not be disposed of with household waste. You are obliged, to dispose of such electrical waste separately.</p> <p>By disposing of electrical waste and other old or defective electronics separately, you support recycling or other forms of re-use. In that way you help to take care and to avoid that harmful substances get into the environment.</p>

Required accessories
<p>Article no.: 17821010</p> <p>LED converter 500 mA, TunableWhite, DALI-DT8 dimmable, 15 W</p> <p>Power: 3 - 15 W, ohne Konfektionierung</p> <p>Dimensions: 178 mm x 46 mm x 22 mm</p> <p>https://www.brumberg.com/fileadmin/products/Datenblatt_17821010_2021_DE.pdf</p>

Optional accessories
<p>Article no.: 83331000</p> <p>Connection box 230 V AC, 5-pole (DALI / 1-10 V)</p> <p>Dimensions: 95 mm x 55 mm x 30 mm</p> <p>https://www.brumberg.com/fileadmin/products/Datenblatt_83331000_2021_DE.pdf</p>
<p>Article no.: 81201180</p> <p>Reducing ring D 110 mm, for luminaire cut-out size 68 mm</p> <p>https://www.brumberg.com/fileadmin/products/Datenblatt_81201180_2021_DE.pdf</p>
<p>Article no.: 81202180</p> <p>Reducing ring D 130 mm, for luminaire cut-out size 68 mm</p> <p>https://www.brumberg.com/fileadmin/products/Datenblatt_81202180_2021_DE.pdf</p>
<p>Article no.: 81203180</p> <p>Reducing ring D 145 mm, for luminaire cut-out size 68 mm</p> <p>https://www.brumberg.com/fileadmin/products/Datenblatt_81203180_2021_DE.pdf</p>