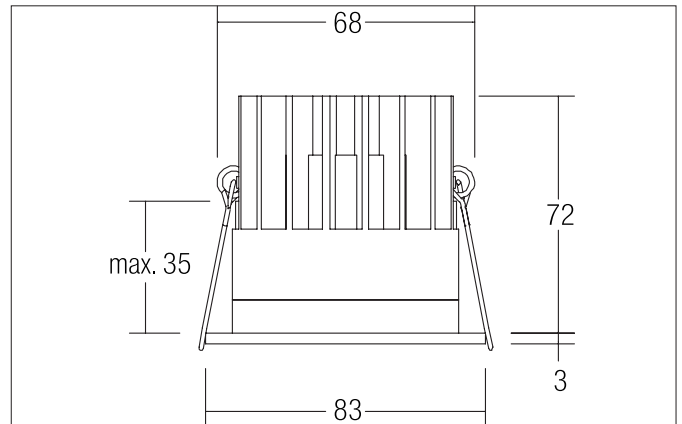
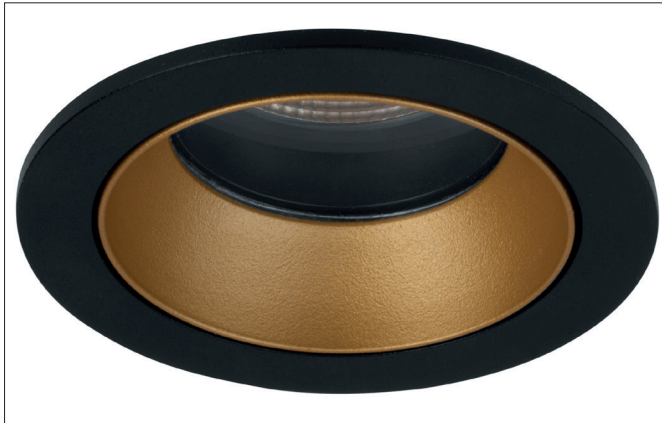



ALTERO-R LED recessed downlight, dim2warm, IP44

Article no. 12035853DW


Tender

Round LED recessed downlight, dim2warm, IP44, tool-free ceiling installation using installation springs. Ceiling cut-out Ø 68 mm, installation depth 72 mm, outer diameter 83 mm, weight 0.241 kg, silver reflector with rotationally symmetrical deep-wide beam light distribution. Cover glass transparent, rated luminous flux 712 lm, rated wattage 1 x 11.8 W, light color warm white to warm white, most similar color temperature (CCT) 3,000 K - 1,800 K, general color rendering index CRI > 90, housing material: aluminum / glass / plastic, color: black structure / gold structure, permissible ambient temperature (ta): -20 °C - +25 °C, protection class (EN 61140): III, degree of protection (DIN EN 60529): IP44. For connection to an external control gear, which is not included with the luminaire. Dimmable depending on the control gear.

Product Benefits

- Modular aufgebaute Produktserie mit hoher Farbvarianz.
- Für flexible Beleuchtungslösungen bei veränderlichen Raumkonzepten von neutral bis akzentuiert.
- Lieferbar in den Farbtemperaturen 3.000 K und 4.000 K und dim2warm (3.000 K - 1.800 K), TunableWhite (2.700 K - 6.500 K) und 2.700 K.
- Standard-Deckenausschnitt 68 mm.
- Vertiefter Lichtaustritt.
- Schutzart IP44 bei Einbau in geschlossenen Decken.
- Ebenfalls lieferbar in quadratischer Ausführung.


ALTERO-R LED recessed downlight, dim2warm, IP44

Article no. 12035853DW

| Article data | |
|--------------------|--|
| Article no. | 12035853DW |
| GTIN | 4251433981824 |
| Series name | ALTERO-R |
| Short description | LED recessed downlight, dim2warm, IP44 |
| Material | Aluminium / Glass / Plastic |
| Colour | black structure / gold structure |
| Type of surface | Structure |
| Shape | Round |
| Outer diameter | 83 mm |
| Built-in diameter | 68 mm |
| Installation depth | 72 mm |
| Hight | 3 mm |
| Weight | 0.241 kg |
| Conformance | CE, UKCA |

| Lighting technology | |
|------------------------------|-------------------|
| Colour temperature | 3.000 K - 1.800 K |
| Light colour | white |
| Color Temperature 1 | 3,000 K |
| Color Temperature 2 | 1,800 K |
| Light output | Direct |
| Luminous flux | 712 lm |
| Luminous flux 1 | 712 lm |
| Luminous flux 2 | 24 lm |
| System efficiency | 60 lm/W |
| Colour rendering | CRI > 90 |
| Reflector | Faceted |
| Reflector colour | silver |
| Beam angle | 33° |
| Light sharing | Symmetric |
| Adjustable color temperature | Infinite control |

| Operating technology of the luminaire | |
|---------------------------------------|--|
| Voltage type | DC |
| Current | 350 mA |
| Lamp | LED |
| Protection class | III |
| Protection class on the ceiling side | IP20 |
| Degree of protection | IP44 |
| Dimmable | Depending on type of control gear |
| Control | Depending on driver |
| Bulb change possible | The light source of this luminaire may only be replaced by the manufacturer or a service technician commissioned by him or a similarly qualified person. |
| Energy efficiency class | nicht erforderlich |

| Mounting technology | |
|------------------------|---|
| Mounting method | Recessed mounting |
| Place of installation | Ceiling-mounted |
| Adjustability | Not adjustable |
| Max. ceiling thickness | 35 mm |
| Further references | No cover with thermal insulation material |
| Material cover | Glass transparent |


ALTERO-R LED recessed downlight, dim2warm, IP44

Article no. 12035853DW

| Packing data | |
|-------------------------|--|
| Gross weight | 0.291 kg |
| Length of packaging | 100 mm |
| Packaging width | 100 mm |
| Packaging height | 100 mm |
| Disposal at end of life | <p>This product must not be disposed of with household waste. You are obliged, to dispose of such electrical waste separately.</p> <p>By disposing of electrical waste and other old or defective electronics separately, you support recycling or other forms of re-use. In that way you help to take care and to avoid that harmful substances get into the environment.</p> |

| Required accessories | |
|---|--|
| Article no.: 17664010 | LED converter 350 mA, trailing-edge phase dimmable |
| Power: 10,2 - 14 W, ohne Konfektionierung | |
| Dimensions: 125 mm x 51 mm x 20 mm | |
| https://www.brumberg.com/fileadmin/products/Datenblatt_17664010_2021_DE.pdf | |
| Article no.: 17643010 | LED converter 350 mA, trailing-edge phase dimmable |
| Power: 8,8 - 18 W, ohne Konfektionierung | |
| Dimensions: 110.5 mm x 52 mm x 22 mm | |
| https://www.brumberg.com/fileadmin/products/Datenblatt_17643010_2021_DE.pdf | |
| Article no.: 17657010 | LED converter 350 mA, 1-10 V dimmable (analog) |
| Power: 5,2 - 18 W, ohne Konfektionierung | |
| Dimensions: 110 mm x 52 mm x 22 mm | |
| https://www.brumberg.com/fileadmin/products/Datenblatt_17657010_2021_DE.pdf | |
| Article no.: 17683010 | LED converter 350 mA, DALI dimmable (digital) |
| Power: 3,5 - 17 W, ohne Konfektionierung | |
| Dimensions: 110.5 mm x 52 mm x 22 mm | |
| https://www.brumberg.com/fileadmin/products/Datenblatt_17683010_2021_DE.pdf | |
| Article no.: 17671010 | LED converter 350mA, ZigBee dimmable |
| Power: 3,5 - 18,5 W, ohne Konfektionierung | |
| Dimensions: 146.5 mm x 44 mm x 30 mm | |
| https://www.brumberg.com/fileadmin/products/Datenblatt_17671010_2021_DE.pdf | |
| Article no.: 17672010 | LED converter 350mA, Casambi dimmable |
| Power: 3,5 - 18,5 W, ohne Konfektionierung | |
| Dimensions: 146.5 mm x 44 mm x 30 mm | |
| https://www.brumberg.com/fileadmin/products/Datenblatt_17672010_2021_DE.pdf | |
| Article no.: 17682010 | LED converter 350 mA, DALI dimmable (digital) |
| Power: 1,8 - 18,5 W, ohne Konfektionierung | |
| Dimensions: 146.5 mm x 43.5 mm x 22 mm | |
| https://www.brumberg.com/fileadmin/products/Datenblatt_17682010_2021_DE.pdf | |

**ALTERO-R LED recessed downlight, dim2warm, IP44**
Article no. 12035853DW**Optional accessories**

Article no.: 83330000

Connection box 230 V AC, 3-pole

Dimensions: 80 mm x 41 mm x 34 mm

https://www.brumberg.com/fileadmin/products/Datenblatt_83330000_2021_DE.pdf

Article no.: 83331000

Connection box 230 V AC, 5-pole (DALI / 1-10 V)

Dimensions: 95 mm x 55 mm x 30 mm

https://www.brumberg.com/fileadmin/products/Datenblatt_83331000_2021_DE.pdf

Article no.: 81201180

Reducing ring D 110 mm, for luminaire cut-out size 68 mm

https://www.brumberg.com/fileadmin/products/Datenblatt_81201180_2021_DE.pdf

Article no.: 81202180

Reducing ring D 130 mm, for luminaire cut-out size 68 mm

https://www.brumberg.com/fileadmin/products/Datenblatt_81202180_2021_DE.pdf

Article no.: 81203180

Reducing ring D 145 mm, for luminaire cut-out size 68 mm

https://www.brumberg.com/fileadmin/products/Datenblatt_81203180_2021_DE.pdf