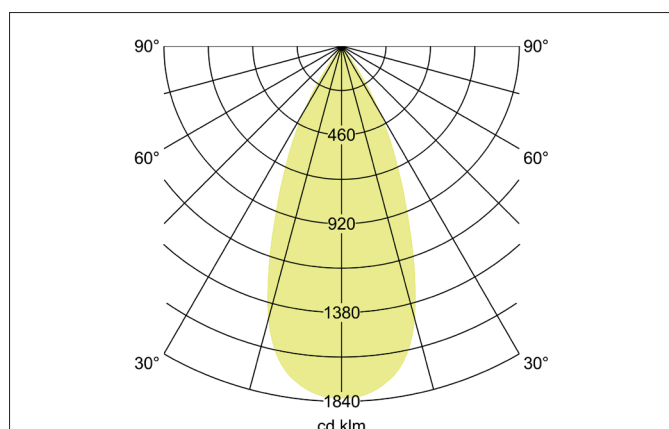
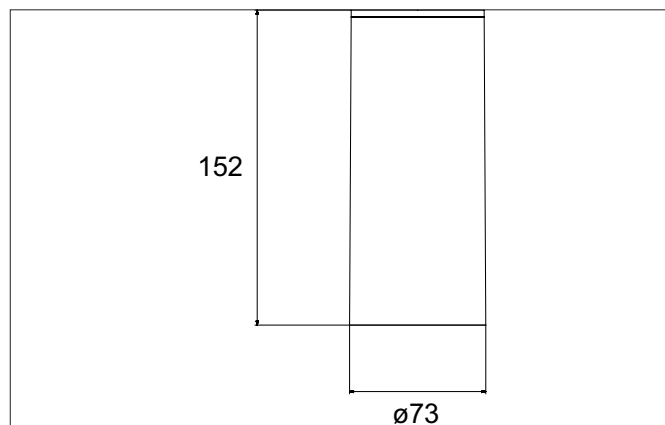


**TRAXX MAXI LED surface mounted spot, DALI**

Article no. 88844163DA

Light.  
For Generations.**Tender**

LED surface mounted spot, DALI, Round. Luminaire diameter 85.0 mm, Hight 163.0 mm Weight 0.655 kg, Reflector silver with rotattions-symmetrical, deep, wide distributed light intensity. optimal light distribution due to a glass transparent cover. Luminous flux 3.710 lm, Power 1 x 28 W, System Efficiency 132 lm/W, Light colour warm white, Correlated color temperature (CCT) 3.000 K, Colour rendering index CRI > 90, Rated life time L80/B50 at 25 °C: 50.000 h, Housing material: Aluminium / Glass / Plastic, Colour: Silver structure, Permissible ambient temperature (ta): -20 °C - +25 °C, Protection class (EN 61140): I, Degree of protection (DIN EN 60529): IP20, .With electronic driver, DALI dimmable.

| Article data      |   |
|-------------------|---|
| Article no.       | 88844163DA  |
| GTIN              | 4251433983316   |
| Series name       | TRAXX MAXI  |
| Short description | LED surface mounted spot, DALI                            |
| Material          | Aluminium / Glass / Plastic                               |
| Colour            | Silver  |
| Type of surface   | Structure   |
| Shape             | Round   |
| Outer diameter    | 85 mm   |
| Hight             | 163 mm  |
| Scope of delivery | Incl. converter for connection to the 230-V mains voltage |
| Weight            | 0.655 kg  |

**TRAXX MAXI LED surface mounted spot, DALI**

Article no. 88844163DA

Light.  
For Generations.

| Lighting technology          |            |
|------------------------------|------------|
| Colour temperature           | 3.000 K    |
| Light colour                 | White      |
| Light output                 | Direct     |
| Luminous flux                | 3,710 lm   |
| System efficiency            | 132 lm/W   |
| Colour rendering             | CRI > 90   |
| Reflector                    | High-gloss |
| Reflector colour             | silver     |
| Beam angle                   | 40°        |
| Light sharing                | Symmetric  |
| Adjustable color temperature | No         |

| Operating technology of the luminaire |  |
|---------------------------------------|--|
| System output                         | 28 W   |
| Voltage type                          | AC   |
| AC nominal voltage max                | 230 V  |
| Frequency max                         | 50 Hz  |
| Lamp                                  | LED  |
| Lamp holder                           | Without fitting  |
| Protection class                      | I  |
| Degree of protection                  | IP20   |
| Dimmable                              | Yes  |
| Control                               | DALI   |
| Bulb change possible                  | The light source of this luminaire may only be replaced by the manufacturer or a service technician commissioned by him or a similarly qualified person. |
| Rated life time L80/B50 at 25 °C      | 50.000 h   |

| Mounting technology         |                   |
|-----------------------------|-------------------|
| Mounting method             | Surface mounting  |
| Place of installation       | Ceiling-mounted   |
| Adjustability               | Not adjustable    |
| stamp                       | UKCA              |
| Material cover              | Glass transparent |
| Suitable for through-wiring | No                |

| Packing data            |   |
|-------------------------|---|
| Gross weight            | 0.718 kg  |
| Length of packaging     | 170 mm  |
| Packaging width         | 170 mm  |
| Packaging height        | 110 mm  |
| Disposal at end of life | This product must not be disposed of with household waste. You are obliged, to dispose of such electrical waste separately.<br>By disposing of electrical waste and other old or defective electronics separately, you support recycling or other forms of re-use. In that way you help to take care and to avoid that harmful substances get into the environment. |