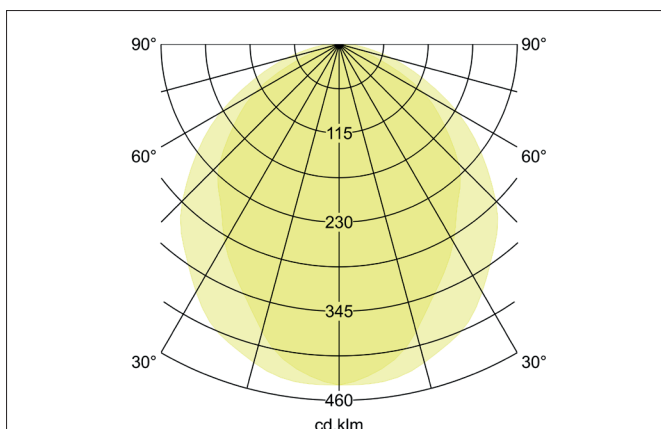
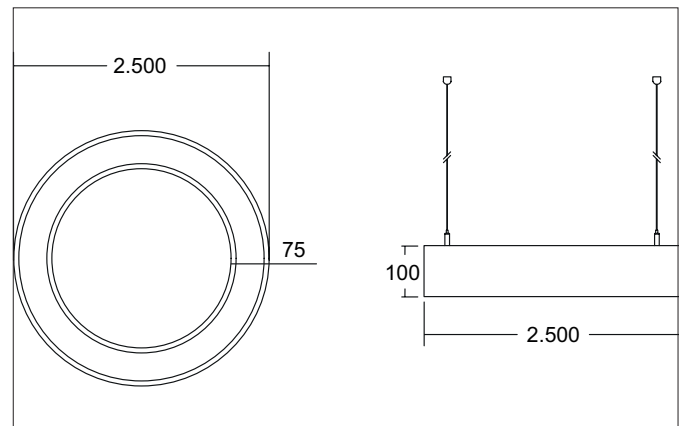



BIRO CIRCLE LED pendant ring light, direct, dimmable

Article no. 13538178


Tender

Round LED pendant ring luminaire, direct, dimmable, luminaire diameter 2500 mm, height 100 mm, for pendant mounting. Pendant length max. 5,000 mm Weight 19.500 kg, with rotationally symmetrical narrow-wide beam light distribution. Opal plastic cover, rated luminous flux 19,937 lm, rated wattage 1 x 166 W, light color warm white to daylight white, most similar color temperature (CCT) 2,700 - 6,500 K, general color rendering index CRI > 80, service life L70/B50 at 25 °C: 276.000 h, service life L80/B20 at 25 °C: 153,000 h, service life L80/B50 at 25 °C: 153,000 h, housing material: aluminum / steel / plastic, color: textured white, permissible ambient temperature (ta): -20 °C - +25 °C, protection class (EN 61140): I, degree of protection (DIN EN 60529): IP20. With electronic control gear, DALI-DT8 dimmable.

| Article data | |
|-------------------|---|
| Article no. | 13538178 |
| GTIN | 4251433962717 |
| Series name | BIRO CIRCLE |
| Short description | LED pendant ring light, direct, dimmable |
| Material | Aluminium / Steel / Plastic |
| Colour | White |
| Type of surface | Structure |
| Shape | Round |
| Outer diameter | 2500 mm |
| Height | 100 mm |
| Scope of delivery | incl. converter for connection to 230 V mains voltage |
| Weight | 19.500 kg |
| Conformance | CE, UKCA |


BIRO CIRCLE LED pendant ring light, direct, dimmable

Article no. 13538178

| Lighting technology | |
|------------------------------|-------------------|
| Colour temperature | 2.700 K - 6.500 K |
| Light colour | White |
| Light output | Direct |
| Luminous flux | 19,937 lm |
| System efficiency | 120 lm/W |
| McAdam-Step | McAdam-Step 3 |
| Colour rendering | CRI > 80 |
| Reflector | Without |
| Beam angle | 110° |
| Light sharing | Symmetric |
| Adjustable color temperature | Infinite control |

| Operating technology of the luminaire | |
|---------------------------------------|--|
| System output | 166 W |
| Voltage type | AC |
| AC nominal voltage max | 230 V |
| Frequency max | 50 Hz |
| Lamp | LED |
| Lamp holder | Without fitting |
| Protection class | I |
| Degree of protection | IP20 |
| Control | DALI-DT8 |
| Bulb change possible | The light source of this luminaire may only be replaced by the manufacturer or a service technician commissioned by him or a similarly qualified person. |
| Rated life time L70/B50 at 25 °C | 276,000 h |
| Rated life time L80/B20 at 25 °C | 153.000 h |
| Rated life time L80/B50 at 25 °C | 153.000 h |
| Rated life time L90/B10 at 25 °C | 74.000 h |
| Energy efficiency class | nicht erforderlich |

| Mounting technology | |
|----------------------------------|-----------------|
| Mounting method | Suspended |
| Place of installation | Ceiling-mounted |
| Adjustability | Not adjustable |
| Pendulum length max. | 5,000 mm |
| Pendant length single suspension | 500 - 5.000 mm |
| Pendulum length centre canopy | 1000 - 10000 mm |
| Number of cable suspensions | 6 |
| Material cover | Plastic, opal |

| Packing data | |
|-------------------------|--|
| Gross weight | 21.5 kg |
| Length of packaging | 2,200 mm |
| Packaging width | 700 mm |
| Packaging height | 350 mm |
| Disposal at end of life | <p>This product must not be disposed of with household waste. You are obliged, to dispose of such electrical waste separately.</p> <p>By disposing of electrical waste and other old or defective electronics separately, you support recycling or other forms of re-use. In that way you help to take care and to avoid that harmful substances get into the environment.</p> |