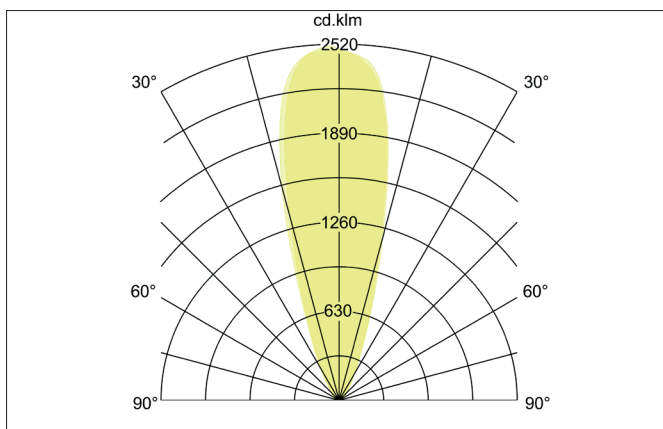
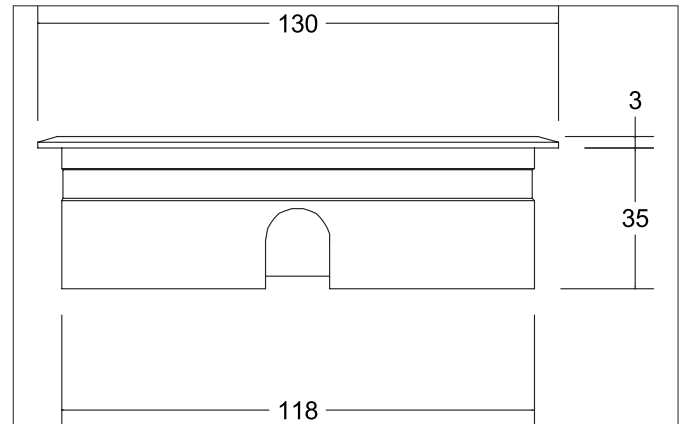


HYBRIDE FLAT LED-floor recessed light, V4A, IP67

Article no. 14035223


Tender

LED-floor recessed light, V4A, IP67, Round. Ceiling cut-out Ø 118 mm, Installation depth 35 mm, Outer diameter 130 mm, Weight 0,821 kg, with rotationssymmetrical, deep, wide distributed light intensity. Cover glass transparent. Luminous flux 450 lm, Power 1 x 9 W, Light colour warm white, Correlated color temprature (CCT) 3.000 K, Colour rendering index CRI > 80, Housing material: Stainless steel V4A / Aluminium / Glass, Colour: Stainless steel, Permissible ambient temperature (ta): -20 °C - +25 °C, Protection class (EN 61140): III, Degree of protection (DIN EN 60529): IP67, shock resistance according to IEC62262: IK08 .For connection to an external driver, which is not included in the scope of delivery of the luminaire. on/off switchable.

Article data	
Article no.	14035223
GTIN	4251433925583
Series name	HYBRIDE FLAT
Short description	LED-floor recessed light, V4A, IP67
Material	Stainless steel V4A / Aluminium / Glass
Colour	Stainless steel
Shape	Round
Outer diameter	130 mm
Built-in diameter	118 mm
Installation depth	35 mm
Scope of delivery	Including 1,000 mm connecting cable with Aquastop and ceiling mounting springs
Weight	0.821 kg
Length of the connection line	1,000 mm
Conformance	CE, UKCA

HYBRIDE FLAT LED-floor recessed light, V4A, IP67

Article no. 14035223

Lighting technology	
Colour temperature	3.000 K
Light colour	White
Luminous flux	450 lm
System efficiency	50 lm/W
Colour rendering	CRI > 80
Beam angle	30°
Light sharing	Symmetric
Adjustable color temperature	No

Operating technology of the luminaire	
System output	9 W
Voltage type	DC
Lamp	LED
Lamp holder	Without fitting
Protection class	III
Degree of protection	IP67
Dimmable	No
Control	on/off
Length of the connection line	1,000 mm
Design of the connecting cable	lateral
Bulb change possible	The light source of this luminaire may only be replaced by the manufacturer or a service technician commissioned by him or a similarly qualified person.

Mounting technology	
Mounting method	Recessed mounting
Place of installation	Floor-mounted
Adjustability	Not adjustable
Max. load	1,000 kg
Over rollable	No
Impact resistance	IK08
Further references	V4A
Material cover	Glass transparent
Suitable for through-wiring	Yes

Packing data	
Gross weight	0.904 kg
Length of packaging	145 mm
Packaging width	140 mm
Packaging height	65 mm
Disposal at end of life	This product must not be disposed of with household waste. You are obliged, to dispose of such electrical waste separately. By disposing of electrical waste and other old or defective electronics separately, you support recycling or other forms of re-use. In that way you help to take care and to avoid that harmful substances get into the environment.

Required accessories	
Article no.: 17207000	
LED power supply 24 V DC, on/off switchable	
Power: 1 - 30 W	
Dimensions: 160 mm x 50 mm x 22 mm	
https://www.brumberg.com/fileadmin/products/Datenblatt_17207000_2021_DE.pdf	