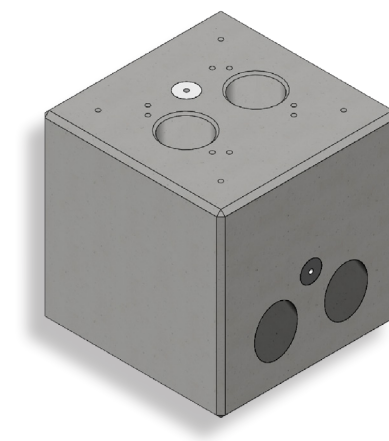


FOUNDATION EMH9996 FOR MOUNTING POLE POLEMH6

For ground installation of the mounting pole POLEMH6, ABL offers the precast foundation block EMH9996, which provides the necessary stability and security for the pole, and contains two integrated tubes to protect the power supply and data cables. The foundation block is made from grade C30/37 concrete and complies with exposure classes XC4 and XF1. 4 x M10 mounting screws are included.



General information

Model	Prefabricated foundation
Product number	EMH9996
EAN	4011721185767
Commodity code	68109100
Packaging unit (PU)	1 unit
Items supplied	Concrete foundation, installation kit

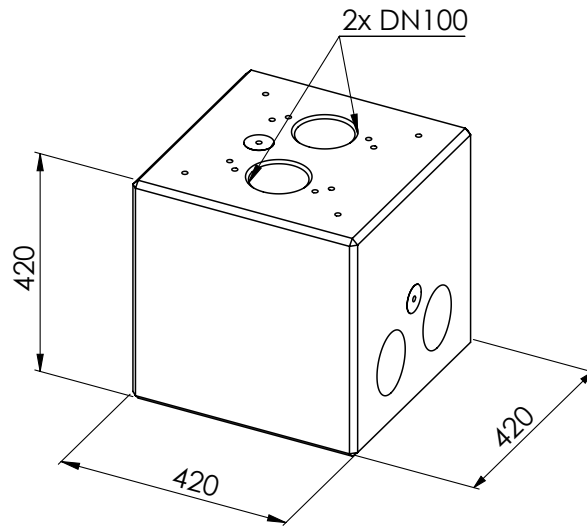
Product information

Fixing type	Anchorage to the ground
Material	Reinforced concrete
Grade	C30/37
Exposure class	XC4 and XF1
Product dimensions (H x W x D)	420 x 420 x 420 mm
Packaging dimensions	Pallet shipping without packaging
Weight per unit	approx. 186 kg

Optional accessories

Mounting pole for eMH3	POLEMH6
------------------------	---------

Dimensioned drawing



Subject to change: All performance characteristics, technical and other specifications are subject to change without prior notice.