

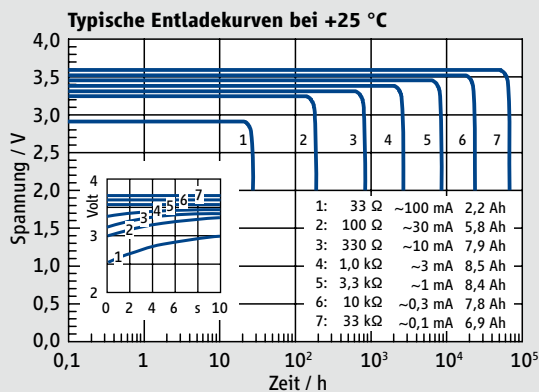
SL-2770 Größe: C

> iXtra – dauerhaft hohe Leistungsfähigkeit

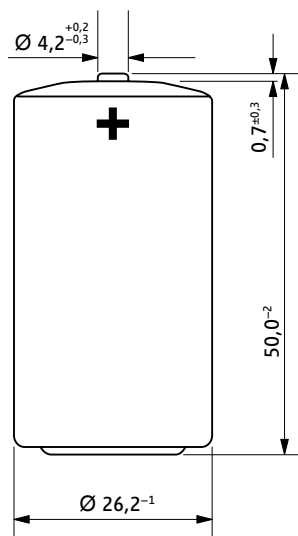
Technische Daten

(Typische Werte nach 1 Jahr Lagerung bei 25 °C)

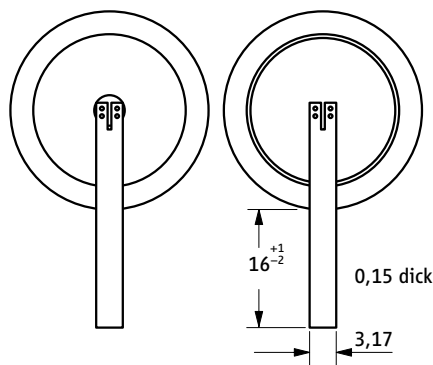
| | |
|------------------------|------------------------|
| System | Lithium-Thionylchlorid |
| Nennspannung | 3,6 V |
| Nennkapazität | 8,5 Ah |
| Nennstrom | 3 mA |
| max. Dauerentladestrom | 230 mA |
| Pulsstromfähigkeit | 400 mA |
| Anodenoberfläche | 30 cm ² |
| Lithiummenge | 2,5 g |
| Gewicht | 49,5 g |
| Rauminhalt | 26 cm ³ |
| Temperaturbereich | -55 °C ... +85 °C |



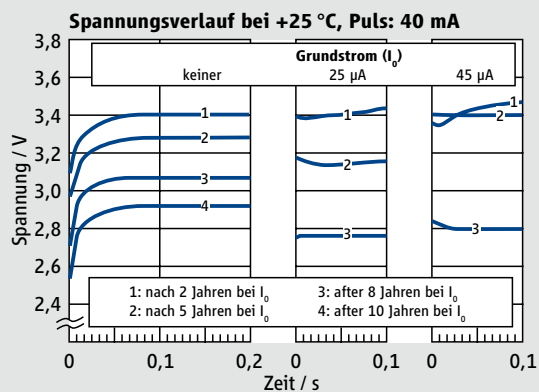
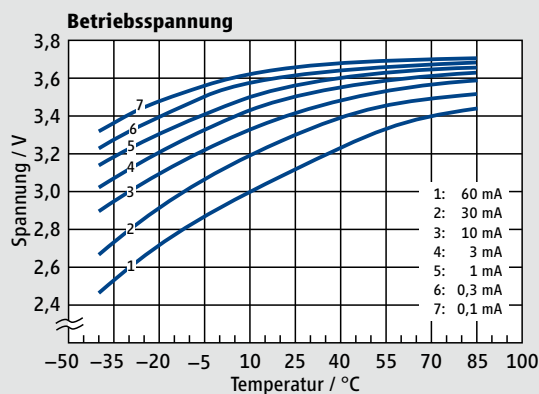
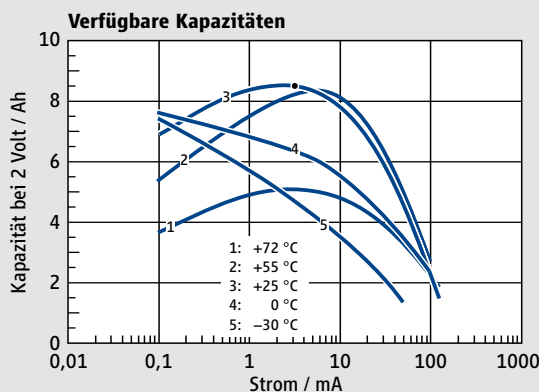
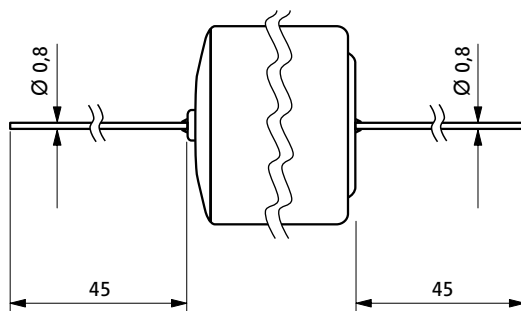
SL-2770/S



SL-2770/T



SL-2770/P



Verfügbare Anschlussarten

| SL-2770/S | Standard | Sach-Nr. |
|-----------|-----------------|---------------|
| SL-2770/S | Standard | 11 2 17701 00 |
| SL-2770/T | Anschlussfahnen | 11 2 17702 00 |
| SL-2770/P | Anschlussdrähte | 11 2 17703 00 |

WARNING: Fire, explosion, and severe burn hazard. Do not recharge, disassemble, heat above 100 °C, incinerate, or expose contents to water.