



GB

Connecting

Switching on

Switching off

Changing battery

End standby

Loading cable ties

DE

Anschließen

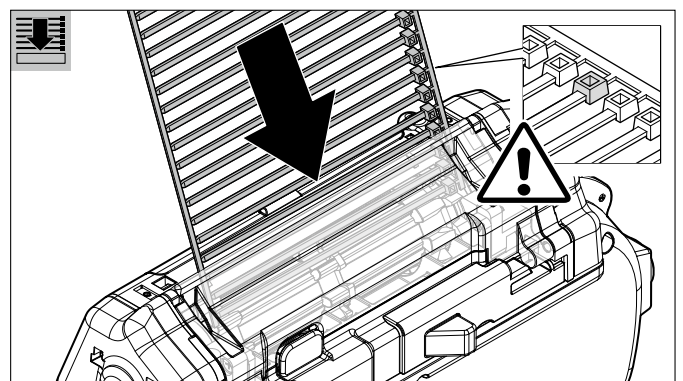
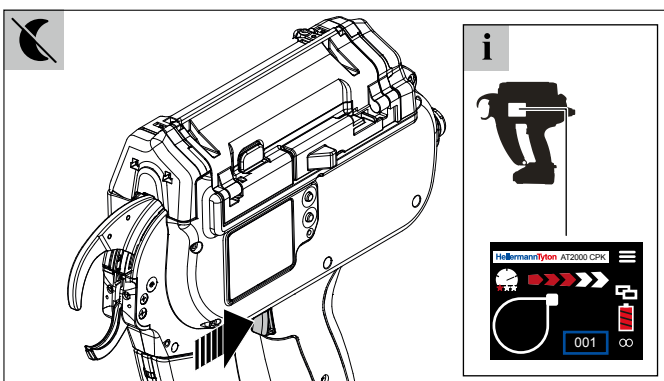
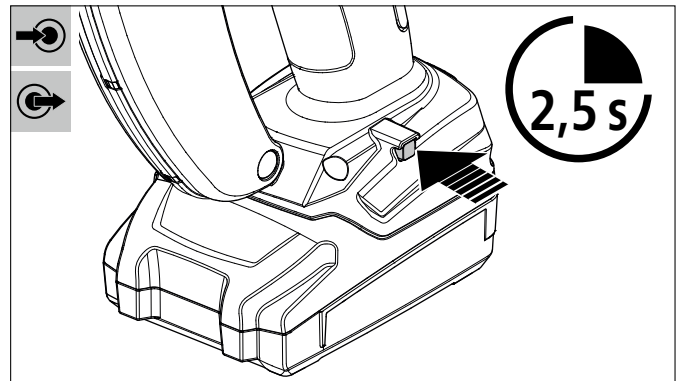
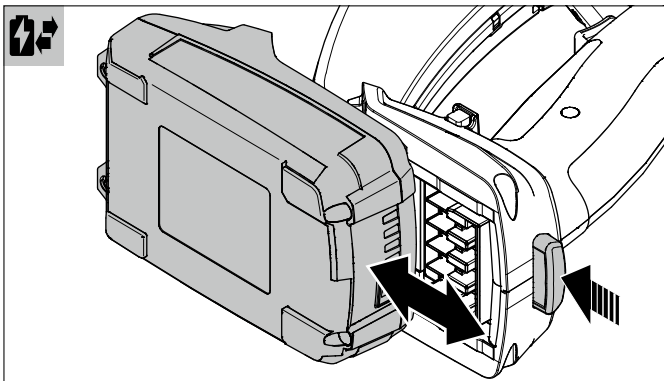
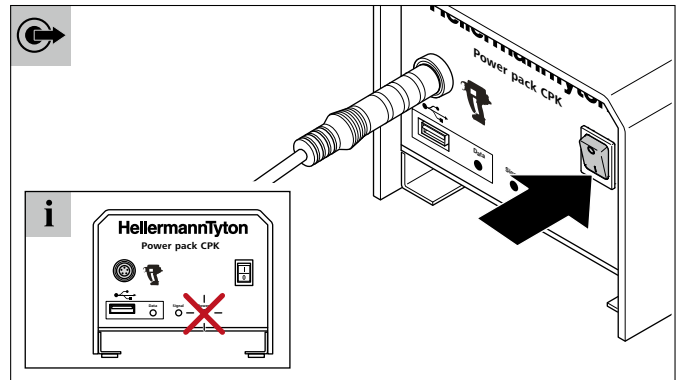
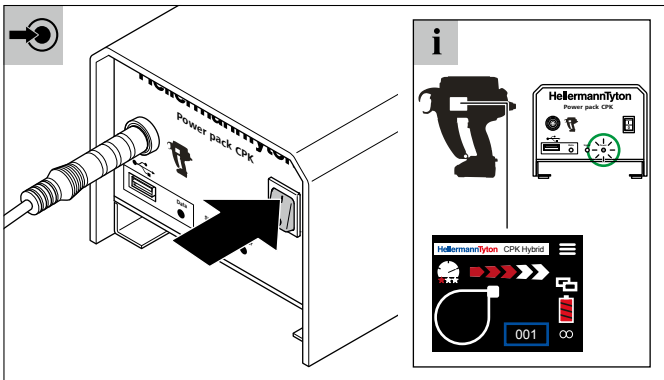
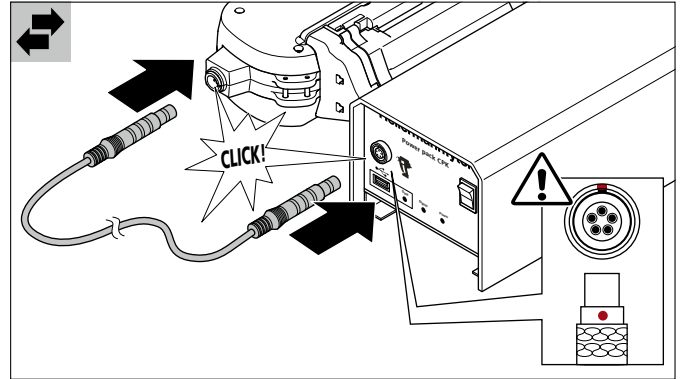
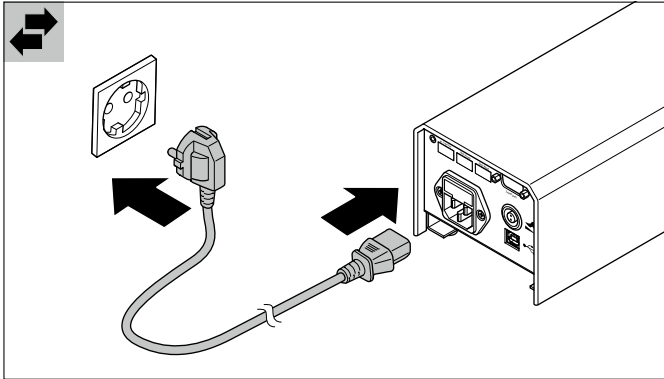
Einschalten

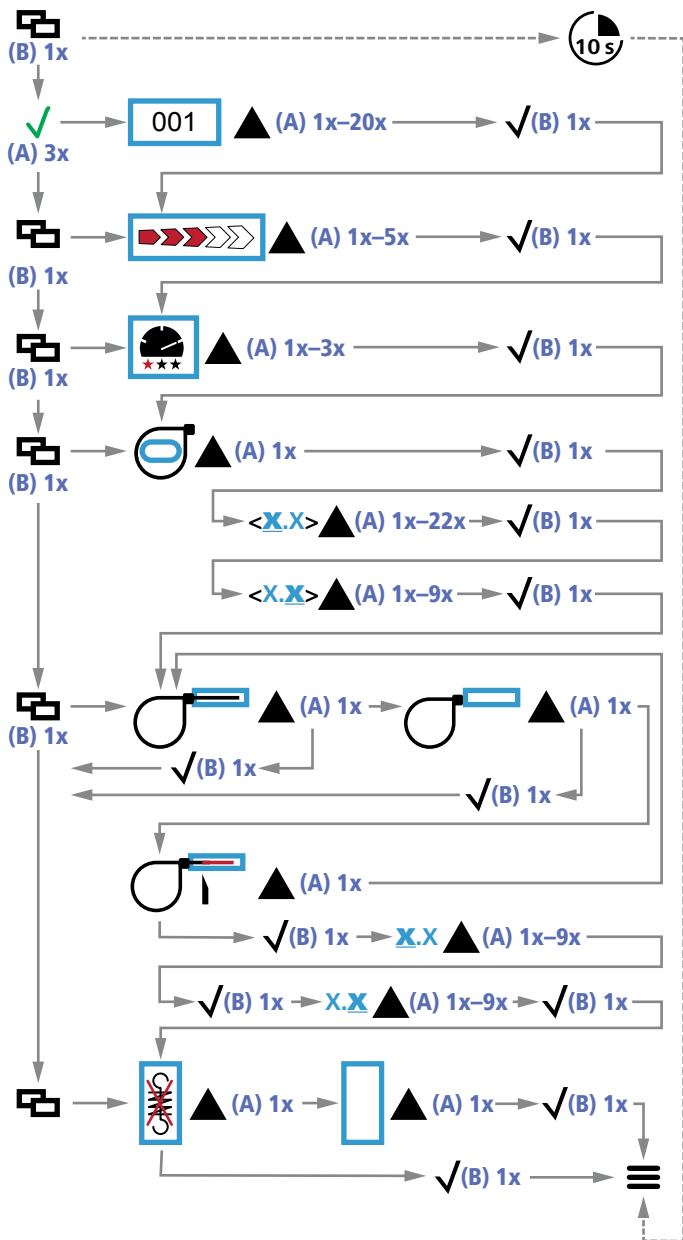
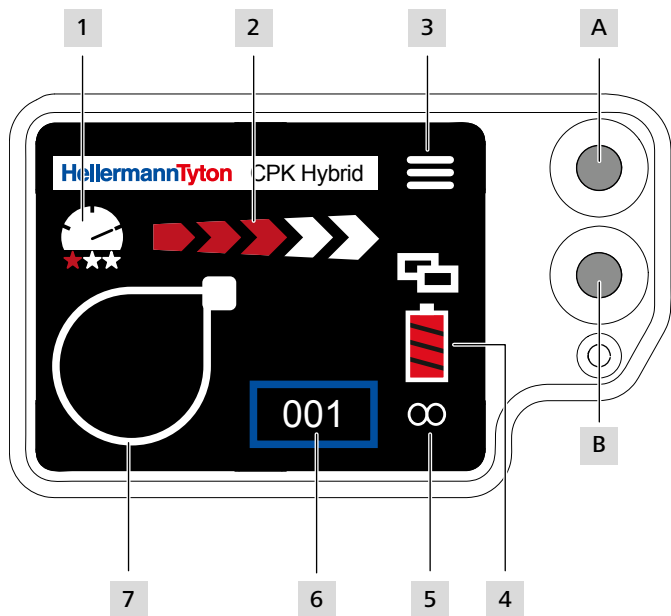
Ausschalten

Akku wechseln

Ruhezustand beenden

Kabelbinder einführen





	1	2	3	4	5	6		7				
GB	Quality level	Force level	Navigation menu / Stepping switch for settings	Battery level (if inserted)	Settings / Accept settings	Parameter set	Continuous drive	Cut with the tension released	Loop	Flush cut	Without cutting	Extended tail
DE	Qualitätsstufe	Kraftstufe	Navigationsmenü / Schrittschalter für Einstellungen	Ladezustand Akku (falls eingesetzt)	Einstellungen / Einstellungen übernehmen	Parametersatz	Serienauflösung	Spannungsfreies Abschneiden	Schleife	Bündig schneiden	Ohne Schneiden	Mit Bandüberstand schneiden