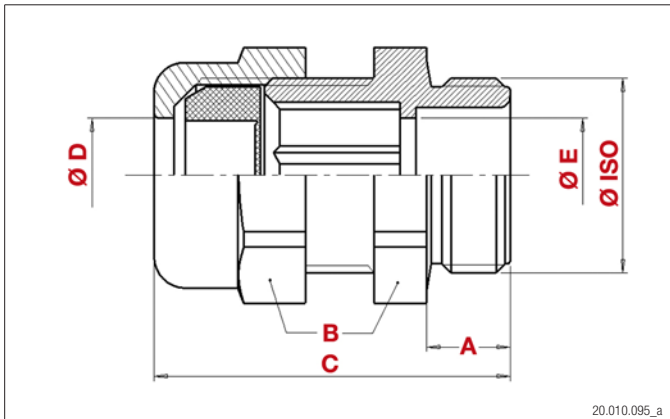


**Kabelverschraubungen**  
Standard Kunststoff metr.

**Presse-étoupes**  
Standard plastique métr.

**Cable glands**  
Standard plastic metr.

# WADI-TEC PA GFK 25% (metr.)



20.010.095\_a



20.010.095\_b

**MAT** PA 6 und 25 % GFK  
PA 6 et 25 % GFK  
PA 6 and 25 % GFK

**RoHS**

**TEMP** -30°C bis + 120°C  
-30°C à + 120°C  
-30°C to + 120°C



IP 68



Tefaloc 60 Sh A

**NORM** EN 60423

**HALO** halogenfrei  
sans halogène  
halogen free

## Kabelverschraubung WADI-TEC PA GFK






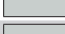


Formschöne Kabelverschraubung aus PA 6, 25% glasfaserverstärkt, mit grossen Klemmbereichen.

## Presse-étoupe WADI-TEC PA GFK

Presse-étoupe élégant en PA 6 et en 25% renforcés de fibres de verre avec une grande gamme de serrage.

## Cable gland WADI-TEC PA GFK

Good looking cable gland in PA 6 and 25% fibre-glass reinforced with wide clamping range.

	>Ø< mm	<b>A</b> mm	<b>B</b> mm	<b>C</b> mm	<b>D</b> mm	<b>E</b> mm		Plica-Nr.	E-Nr.	VE
M12	3-6	8	15	31	6.5	7		90.5377.312		50
M16	4.5-8	8	19	32	8.5	9		90.5377.316		50
M20	7-12	9	24	36	12.5	13.5		90.5377.320		50
	9-14	9	27	39	14.5	15		90.5377.321		50
M25	11.5-18	11	33	44	18.5	19		90.5377.325		20
M32	15-24.5	12	42	55	25	25		90.5377.332		20