

panel mounting socket outlet, angled - flange 85x85,
fixing centers 70x70

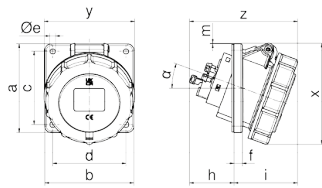


| Product description | |
|---------------------------|--|
| BALS-Prd.-Nr | 128241 |
| EAN | 4024941379588 |
| Product category | Panel mounting socket outlet INNOLINQ QUICK-CONNECT angled |
| Current | 32A |
| Number of poles | 5p |
| Arrangement of phases | 3p+N+PE |
| Position of earth contact | 6 h |
| Voltage | 200/346 - 240/415V~ |

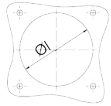
| Product description | |
|--------------------------------|--|
| Frequency | 50/60Hz |
| Protection degree | IP67 |
| Colour code | red RAL 3000 |
| Colour of appliance | Hinged lid red RAL 3000, Bayonet ring grey RAL 7035, Enclosure grey RAL 7035 |
| Connection design | screwless spring terminals with KONTEX-ULTRA contact |
| Maximum conductor size | 10,0 qmm |
| Cable entry | other |
| Height | 111mm |
| Width | 102mm |
| Depth | 123mm |
| Flange size vertical in mm | 85mm |
| Flange size horizontal in mm | 85mm |
| Drill hole dist. vertical mm | 70mm |
| Drill hole dist. horizontal mm | 70mm |
| Material of enclosure | Polyamide |
| Contacts | The contact carrier is made of polyamide, The contacts are brass, The contact carrier is made of high temperature resistant material |

| Additional technical properties | |
|---------------------------------|--|
| | The inclination is 20°, This product is without any lead |

| Logistics data | |
|----------------|------------------|
| Weight/pcs | 0.293 kg / Piece |
| Packaging | Bag |
| Content amount | 1 ST |
| EAN | 4024941379588 |
| Length | 123 mm |
| Width | 102 mm |
| Height | 111 mm |
| Weight | 0.294 kg |
| Volume | 1,392.606 ccm |
| Packaging | Carton |
| Content amount | 10 ST |
| EAN | 4024941397698 |
| Length | 325 mm |
| Width | 217 mm |
| Height | 210 mm |
| Weight | 3.136 kg |
| Volume | 13,588.4 ccm |



Einbauöffnung



4MB505

| Ampere Poles | 16 3 | 16 5 | 32 3 | 32 4 | 32 5 |
|--------------|---------|---------|---------|---------|---------|
| a | 85,0 | 85,0 | 85,0 | 85,0 | 85,0 |
| b | 85,0 | 85,0 | 85,0 | 85,0 | 85,0 |
| c | 70,0 | 70,0 | 70,0 | 70,0 | 70,0 |
| d | 70,0 | 70,0 | 70,0 | 70,0 | 70,0 |
| Øe | 5,5 | 5,5 | 5,5 | 5,5 | 5,5 |
| f | 8,0 | 8,0 | 8,0 | 8,0 | 8,0 |
| h | 43,0 | 43,0 | 53,0 | 53,0 | 53,0 |
| i | 57,0 | 61,0 | 68,0 | 68,0 | 69,0 |
| Øl | 57,0 | 70,0 | 78,0 | 78,0 | 78,0 |
| m | - | 1,0 | 1,0 | 1,0 | 7,5 |
| x | 90,0 | 97,0 | 102,0 | 102,0 | 112,0 |
| y | 85,0 | 86,5 | 94,0 | 94,0 | 101,5 |
| z | 100,0 | 104,0 | 121,0 | 121,0 | 122,0 |
| α | 20° | 20° | 20° | 20° | 20° |

