

panel mounting socket outlet, angled - flange 85x85,
fixing centers 70x70

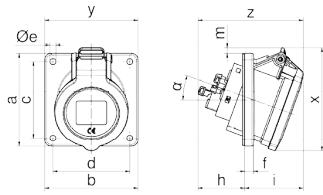


| Product description | |
|---------------------------|--|
| BALS-Prd.-Nr | 127491-N |
| EAN | 4024941393324 |
| Product category | Panel mounting socket outlet INNOLINQ QUICK-CONNECT angled |
| Current | 16A |
| Number of poles | 3p |
| Arrangement of phases | 2P+PE |
| Position of earth contact | 6 h |
| Voltage | 200 - 250V~ |

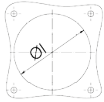
| Product description | |
|--------------------------------|--|
| Frequency | 50/60Hz |
| Protection degree | IP54 |
| Colour code | blue RAL 5015 |
| Colour of appliance | Hinged lid blue RAL 5015, Enclosure grey RAL 7035 |
| Connection design | screwless spring terminals with KONTEX-ULTRA contact |
| Maximum conductor size | 4,0 qmm |
| Cable entry | other |
| Height | 85mm |
| Width | 85mm |
| Depth | 103mm |
| Flange size vertical in mm | 85mm |
| Flange size horizontal in mm | 85mm |
| Drill hole dist. vertical mm | 70mm |
| Drill hole dist. horizontal mm | 70mm |
| Material of enclosure | Polyamide |
| Contacts | the contacts are brass nickel plated, The contact carrier is made of high temperature resistant material |

| Additional technical properties | |
|---------------------------------|------------------------|
| | The inclination is 20° |

| Logistics data | |
|----------------|----------------|
| Weight/pcs | 0.0 kg / Piece |
| Packaging | Bag |
| Content amount | 1 ST |
| EAN | 4024941393324 |
| Length | 103 mm |
| Width | 85 mm |
| Height | 85 mm |
| Weight | 0.001 kg |
| Volume | 744.175 ccm |
| Packaging | Carton |
| Content amount | 10 ST |
| EAN | 4024941398299 |
| Length | 275 mm |
| Width | 175 mm |
| Height | 137 mm |
| Weight | 0.125 kg |
| Volume | 5,737.5 ccm |



Einbauöffnung



4MB504

| Ampere Poles | 16 3 | 16 5 | 32 3 | 32 4 | 32 5 |
|--------------|---------|---------|---------|---------|---------|
| a | 85,0 | 85,0 | 85,0 | 85,0 | 85,0 |
| b | 85,0 | 85,0 | 85,0 | 85,0 | 85,0 |
| c | 70,0 | 70,0 | 70,0 | 70,0 | 70,0 |
| d | 70,0 | 70,0 | 70,0 | 70,0 | 70,0 |
| Øe | 5,5 | 5,5 | 5,5 | 5,5 | 5,5 |
| f | 8,0 | 8,0 | 8,0 | 8,0 | 8,0 |
| h | 43,0 | 43,0 | 53,0 | 53,0 | 54,0 |
| i | 49,0 | 54,0 | 58,0 | 58,0 | 60,0 |
| Øl | 57,0 | 70,0 | 76,0 | 76,0 | 78,0 |
| m | - | 5,5 | 6,0 | 6,0 | 13,0 |
| x | 85,0 | 95,0 | 99,0 | 99,0 | 108,0 |
| y | 85,0 | 85,0 | 85,0 | 85,0 | 85,0 |
| z | 92,0 | 97,0 | 111,0 | 111,0 | 114,0 |
| α | 20° | 20° | 20° | 20° | 20° |

