

panel mounting socket outlet, angled - flange 75x75,
fixing centers 60x60

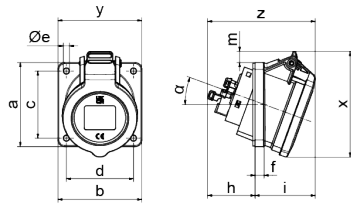


| Product description | |
|---------------------------|--|
| BALS-Prd.-Nr | 1220011 |
| EAN | 4024941379458 |
| Product category | Panel mounting socket outlet INNOLINQ QUICK-CONNECT angled |
| Current | 16A |
| Number of poles | 5p |
| Arrangement of phases | 3p+N+PE |
| Position of earth contact | 6 h |
| Voltage | 200/346 - 240/415V~ |

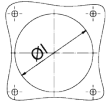
| Product description | |
|--------------------------------|--|
| Frequency | 50/60Hz |
| Protection degree | IP54 |
| Colour code | red RAL 3000 |
| Colour of appliance | Hinged lid red RAL 3000, Enclosure grey RAL 7035 |
| Connection design | screwless spring terminals with KONTEX-ULTRA contact |
| Maximum conductor size | 4,0 qmm |
| Cable entry | other |
| Height | 95mm |
| Width | 75mm |
| Depth | 97mm |
| Flange size vertical in mm | 75mm |
| Flange size horizontal in mm | 75mm |
| Drill hole dist. vertical mm | 60mm |
| Drill hole dist. horizontal mm | 60mm |
| Material of enclosure | Polyamide |
| Contacts | The contacts are brass, The contact carrier is made of high temperature resistant material |

| Additional technical properties | |
|---------------------------------|--|
| | The inclination is 20°, This product is without any lead |

| Logistics data | |
|----------------|------------------|
| Weight/pcs | 0.141 kg / Piece |
| Packaging | Bag |
| Content amount | 1 ST |
| EAN | 4024941379458 |
| Length | 97 mm |
| Width | 75 mm |
| Height | 95 mm |
| Weight | 0.142 kg |
| Volume | 691.125 ccm |
| Packaging | Carton |
| Content amount | 10 ST |
| EAN | 4024941390323 |
| Length | 245 mm |
| Width | 177 mm |
| Height | 185 mm |
| Weight | 1.543 kg |
| Volume | 7,140 ccm |



Einbauöffnung



4MB508

| Ampere | 16 |
|--------|------|
| Poles | 5 |
| a | 75,0 |
| b | 75,0 |
| c | 60,0 |
| d | 60,0 |
| Øe | 5,5 |
| f | 8,0 |
| h | 43,0 |
| i | 54,0 |
| Øl | 70,0 |
| m | 11,0 |
| x | 95,0 |
| y | 75,0 |
| z | 97,0 |

