

panel mounting socket outlet, angled - flange 85x85,  
fixing centers 70x70

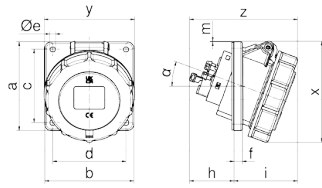


Product description	
BALS-Prd.-Nr	128241
EAN	4024941379588
Product category	Panel mounting socket outlet INNOLINQ QUICK-CONNECT angled
Current	32A
Number of poles	5p
Arrangement of phases	3p+N+PE
Position of earth contact	6 h
Voltage	200/346 - 240/415V~

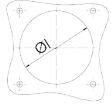
Product description	
Frequency	50/60Hz
Protection degree	IP67
Colour code	red RAL 3000
Colour of appliance	Hinged lid red RAL 3000, Bayonet ring grey RAL 7035, Enclosure grey RAL 7035
Connection design	screwless spring terminals with KONTEX-ULTRA contact
Maximum conductor size	10,0 qmm
Cable entry	other
Height	111mm
Width	102mm
Depth	123mm
Flange size vertical in mm	85mm
Flange size horizontal in mm	85mm
Drill hole dist. vertical mm	70mm
Drill hole dist. horizontal mm	70mm
Material of enclosure	Polyamide
Contacts	The contact carrier is made of polyamide, The contacts are brass, The contact carrier is made of high temperature resistant material

Additional technical properties	
	The inclination is 20°, This product is without any lead

Logistics data	
Weight/pcs	0.293 kg / Piece
Packaging	Bag
Content amount	1 ST
EAN	4024941379588
Length	123 mm
Width	102 mm
Height	111 mm
Weight	0.294 kg
Volume	1,392.606 ccm
Packaging	Carton
Content amount	10 ST
EAN	4024941397698
Length	325 mm
Width	217 mm
Height	210 mm
Weight	3.136 kg
Volume	13,588.4 ccm



Einbauöffnung



4MB505

Ampere Poles	16 3	16 5	32 3	32 4	32 5
a	85,0	85,0	85,0	85,0	85,0
b	85,0	85,0	85,0	85,0	85,0
c	70,0	70,0	70,0	70,0	70,0
d	70,0	70,0	70,0	70,0	70,0
Øe	5,5	5,5	5,5	5,5	5,5
f	8,0	8,0	8,0	8,0	8,0
h	43,0	43,0	53,0	53,0	53,0
i	57,0	61,0	68,0	68,0	69,0
Øl	57,0	70,0	78,0	78,0	78,0
m	-	1,0	1,0	1,0	7,5
x	90,0	97,0	102,0	102,0	112,0
y	85,0	86,5	94,0	94,0	101,5
z	100,0	104,0	121,0	121,0	122,0
α	20°	20°	20°	20°	20°

