

panel mounting socket outlet, angled - flange 85x85,
fixing centers 70x70

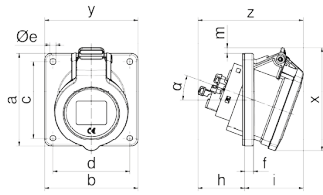


Product description	
BALS-Prd.-Nr	127491
EAN	4024941379359
Product category	Panel mounting socket outlet INNOLINQ QUICK-CONNECT angled
Current	16A
Number of poles	3p
Arrangement of phases	2P+PE
Position of earth contact	6 h
Voltage	200 - 250V~

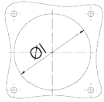
Product description	
Frequency	50/60Hz
Protection degree	IP54
Colour code	blue RAL 5015
Colour of appliance	Hinged lid blue RAL 5015, Enclosure grey RAL 7035
Connection design	screwless spring terminals with KONTEX-ULTRA contact
Maximum conductor size	4,0 qmm
Cable entry	other
Height	85mm
Width	85mm
Depth	103mm
Flange size vertical in mm	85mm
Flange size horizontal in mm	85mm
Drill hole dist. vertical mm	70mm
Drill hole dist. horizontal mm	70mm
Material of enclosure	Polyamide
Contacts	The contacts are brass, The contact carrier is made of high temperature resistant material

Additional technical properties	
	The inclination is 20°

Logistics data	
Weight/pcs	0.0 kg / Piece
Packaging	Bag
Content amount	1 ST
EAN	4024941379359
Length	103 mm
Width	85 mm
Height	85 mm
Weight	0.001 kg
Volume	744.175 ccm
Packaging	Carton
Content amount	10 ST
EAN	4024941383417
Length	275 mm
Width	175 mm
Height	137 mm
Weight	0.125 kg
Volume	5,737.5 ccm



Einbauöffnung



4MB504

Ampere Poles	16 3	16 5	32 3	32 4	32 5
a	85,0	85,0	85,0	85,0	85,0
b	85,0	85,0	85,0	85,0	85,0
c	70,0	70,0	70,0	70,0	70,0
d	70,0	70,0	70,0	70,0	70,0
Øe	5,5	5,5	5,5	5,5	5,5
f	8,0	8,0	8,0	8,0	8,0
h	43,0	43,0	53,0	53,0	54,0
i	49,0	54,0	58,0	58,0	60,0
Øl	57,0	70,0	76,0	76,0	78,0
m	-	5,5	6,0	6,0	13,0
x	85,0	95,0	99,0	99,0	108,0
y	85,0	85,0	85,0	85,0	85,0
z	92,0	97,0	111,0	111,0	114,0
α	20°	20°	20°	20°	20°

