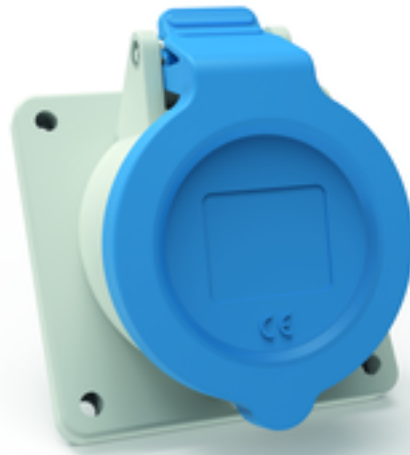


panel mounting socket outlet, angled - flange 85x85,
fixing centers 70x70

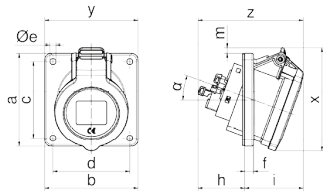


Product description	
BALS-Prd.-Nr	127611
EAN	4024941388504
Product category	Panel mounting socket outlet INNOLINQ QUICK-CONNECT angled
Current	32A
Number of poles	3p
Arrangement of phases	2P+PE
Position of earth contact	6 h
Voltage	200 - 250V~

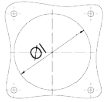
Product description	
Frequency	50/60Hz
Protection degree	IP54
Colour code	blue RAL 5015
Colour of appliance	Hinged lid blue RAL 5015, Enclosure grey RAL 7035
Connection design	screwless spring terminals with KONTEX-ULTRA contact
Maximum conductor size	10,0 qmm
Cable entry	other
Height	101mm
Width	85mm
Depth	120.2mm
Flange size vertical in mm	85mm
Flange size horizontal in mm	85mm
Drill hole dist. vertical mm	70mm
Drill hole dist. horizontal mm	70mm
Material of enclosure	Polyamide
Contacts	The contact carrier is made of polyamide, The contacts are brass

Additional technical properties	
	The inclination is 20°, This product is without any lead

Logistics data	
Weight/pcs	0.179 kg / Piece
Packaging	Bag
Content amount	1 ST
EAN	4024941388504
Length	120.2 mm
Width	85 mm
Height	101 mm
Weight	0.18 kg
Volume	1,031.917 ccm
Packaging	Carton
Content amount	10 ST
EAN	4024941398022
Length	128 mm
Width	225 mm
Height	399 mm
Weight	2.049 kg
Volume	11,491.2 ccm



Einbauöffnung



4MB504

Ampere Poles	16 3	16 5	32 3	32 4	32 5
a	85,0	85,0	85,0	85,0	85,0
b	85,0	85,0	85,0	85,0	85,0
c	70,0	70,0	70,0	70,0	70,0
d	70,0	70,0	70,0	70,0	70,0
Øe	5,5	5,5	5,5	5,5	5,5
f	8,0	8,0	8,0	8,0	8,0
h	43,0	43,0	53,0	53,0	54,0
i	49,0	54,0	58,0	58,0	60,0
Øl	57,0	70,0	76,0	76,0	78,0
m	-	5,5	6,0	6,0	13,0
x	85,0	95,0	99,0	99,0	108,0
y	85,0	85,0	85,0	85,0	85,0
z	92,0	97,0	111,0	111,0	114,0
α	20°	20°	20°	20°	20°

