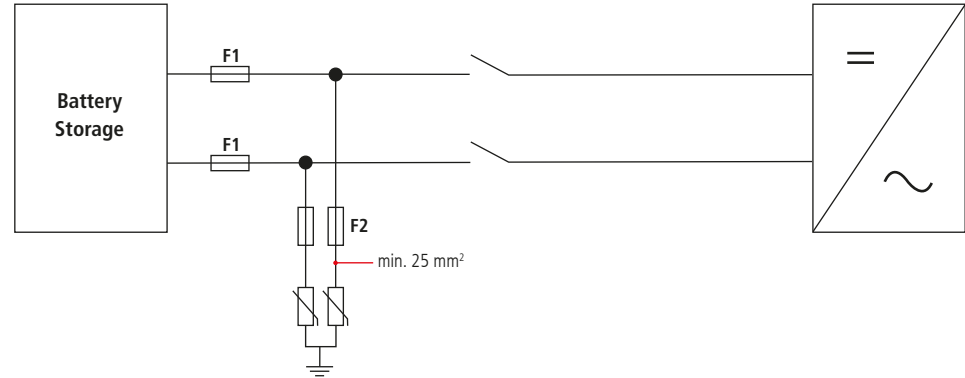
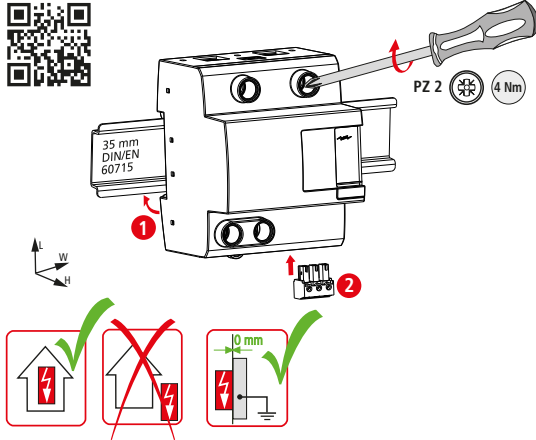


DEHNcharge DCG T1 BATT 1500 FM

- DE Einbauanleitung
- GB Installation instructions
- IT Istruzioni di montaggio
- FR Instructions de montage
- NL Montagehandleiding
- ES Instrucciones de montaje
- PT Instruções de montagem
- DK Monteringsvejledning
- SE Monteringsanvisning
- FI Asennusohje
- GR Οδηγίες συναρμολόγησης
- PL Instrukcja montażu
- CZ Návod k montáži
- TR Montaj kılavuzu
- RU Инструкция по монтажу
- CN 安装说明
- HU Szerelési útmutató
- JP 設置説明書



F2:

**Einsatz in DC Batteriespeichersystemen bis  $I_{SCCR}$**   
**Vorsicherung für DC Batteriespeichersysteme bis  $I_{SCCR}$**   
**Vorsicherung für DC Batteriespeichersysteme bis  $I_{SCCR}$**

$\leq 100 \text{ kA (} t \leq 5.83 \text{ ms)}$   
 Bussman HLS 2000Vdc /200 A 2+/A173 DST aR, Art.-Nr.: 170M2040  
 Mersen Protistor D122SD20C200QF 200A 2000V DC aR

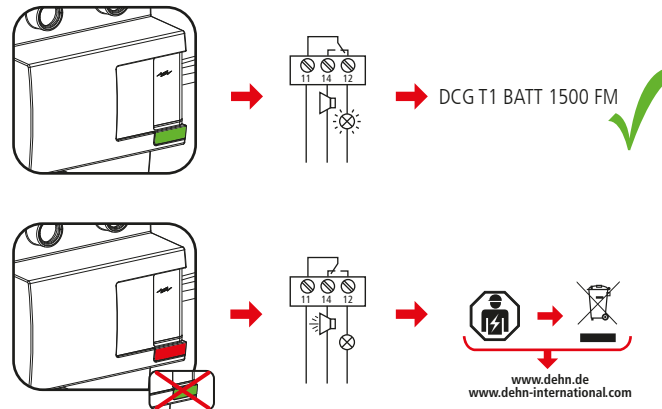
**For use in battery storage systems up to  $I_{SCCR}$**   
**Backup fuse for DC battery storage systems up to  $I_{SCCR}$**   
**Backup fuse for DC battery storage systems up to  $I_{SCCR}$**

$\leq 100 \text{ kA (} t \leq 5.83 \text{ ms)}$   
 Bussman HLS 2000Vdc /200 A 2+/A173 DST aR, Part No.: 170M2040  
 Mersen Protistor D122SD20C200QF 200A 2000V DC aR

DCG T1 BATT 1500 FM

$U_C$ (DC+ $\leftrightarrow$ DC-)	$\leq 1500 \text{ V DC}$
$U_C$ (DC+/DC- $\leftrightarrow$ PE)	$\leq 750 \text{ V DC}$
$I_{Total}$	10 kA (10/350)
$I_{imp}$	5 kA (10/350)
$I_n$	12.5 kA (8/20)
$I_{SCCR}$	100 kA
$I_{PE, AC/DC}$	$\leq 25 \mu\text{A}$
$\theta$	$-40^\circ\text{C} \dots +80^\circ\text{C}$
$\Phi$	5% ... 95%
IP 1)	20
L x W x H	72 mm x 90 mm x 73 mm

min. <input type="checkbox"/> DC+/-, DC-/+ , $\perp$	12 mm	12 mm	12 mm	1.5 mm <sup>2</sup>
max. <input type="checkbox"/> DC+/-, DC-/+ , $\perp$	25 mm	35 mm		35 mm <sup>2</sup>
<input type="checkbox"/>	16 mm <sup>2</sup> Cu	$\geq 15.5 \text{ mm}$		



DCG T1 BATT 1500 FM	
$U_N / I_N$	AC: 250 V / 0.5 A
$0.2 \text{ Nm}$	DC: 250 V / 0.1 A 125 V / 0.2 A 75 V / 0.5 A
max. 1.5 mm <sup>2</sup>	

