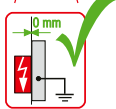
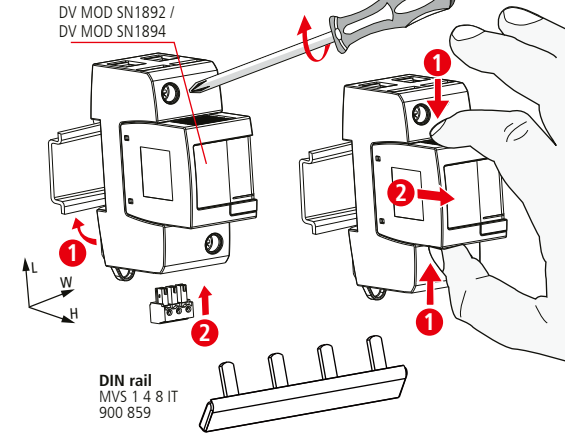


DEHNventil DV M2 880 FM

- DE Einbauanleitung
- GB Installation instructions
- IT Istruzioni di montaggio
- FR Instructions de montage
- NL Montagehandleiding
- ES Instrucciones de montaje
- PT Instruções de montagem
- DK Monteringsvejledning
- SE Monteringsanvisning
- FI Asennusohje
- GR Οδηγίες συναρμολόγησης
- PL Instrukcja montażu
- CZ Montážní návod
- TR Kurulum Talimatları
- RU Инструкция по монтажу
- CN 安装说明
- HU Szerelési útmutató
- JP 設置説明書

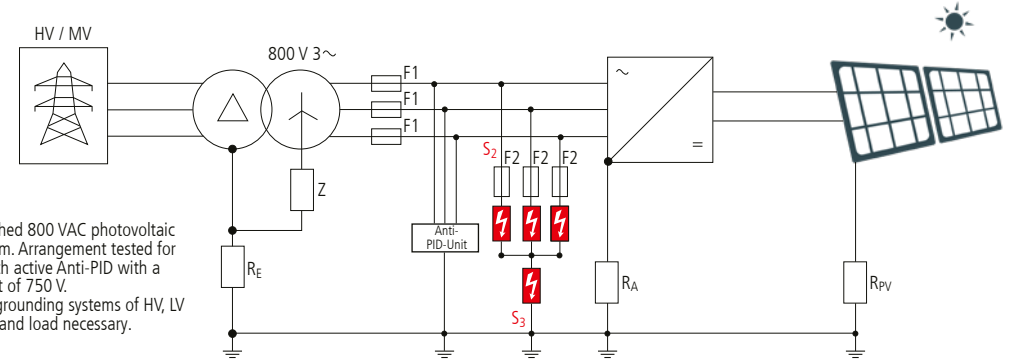


I-II IEC 61643-11
1+2 EN 61643-11 PZ 2 (4 Nm)



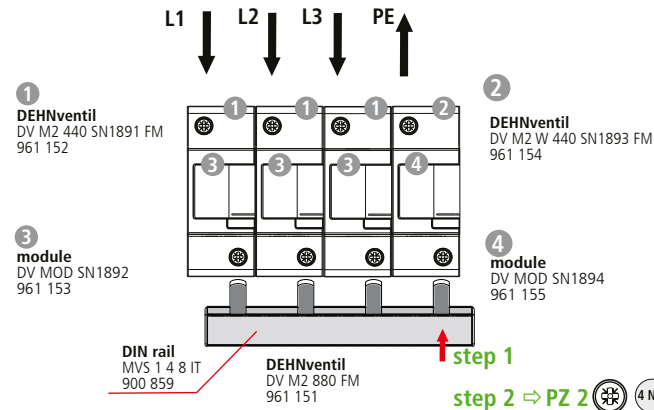
DIN rail
MVS 1 4 8 IT
900 859

Application



Three-phase unearthed 800 VAC photovoltaic string inverter system. Arrangement tested for inverter systems with active Anti-PID with a maximum DC Offset of 750 V. Interconnection of grounding systems of HV, LV side of transformer and load necessary.

Interconnection of set

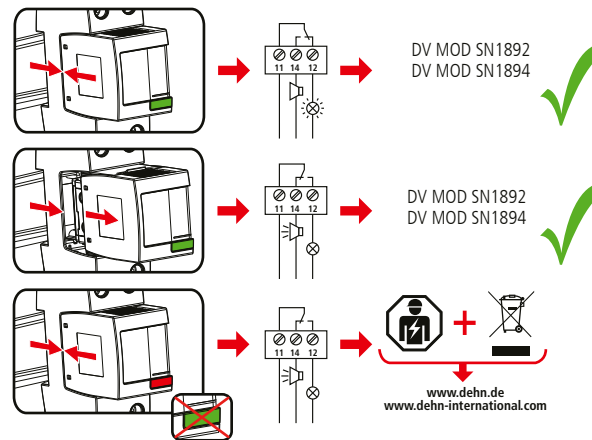


DEHNventil modular DV M2 880 FM	
F1	F1 > 160 A gG F2 ≤ 160 A gG
F2	F1 ≤ 160 A gG

F1	S ₂ / mm ²	S ₃ / mm ²	F2
A gG			A gG
25	6	16	...
35	6	16	...
40	6	16	...
50	6	16	...
63	10	16	...
80	10	16	...
100	16	16	...
125	16	16	...
160	16	16	...
>160	16	16	160

DV M2 880 FM	
U _N / Tol.: ±10%	800 V (50/60 Hz)
U _C	880 V (50/60 Hz)
I _{fi}	50 kA _{rms}
I _{SCCR}	50 kA _{rms}
I _{imp} 10/350 μs	12,5 kA (1,2 ⇒ 3)
I _n 8/20 μs	20 kA (1,2 ⇒ 3)
max. I	160 A gG
θ	-40°C ... + 80°C
I _{PE}	<< 10 μA
φ	5% ... 95%
IP 1)	20
L x W x H	90 mm x 144 mm x 66 mm

min. □ 1, 2, 3	6 mm ²	
max. □ 1, 2, 3	25 mm ²	35 mm ²
□ ⚠	16 mm ² Cu	≥ 15.5 mm



DEHNventil modular DV M2 440 SN1891 FM DV M2 W 440 SN1893 FM	
U _N / I _N	AC: 250 V / 0.5 A
	DC: 250 V / 0.1 A 125 V / 0.2 A 75 V / 0.5 A
max. 1.5 mm ²	

