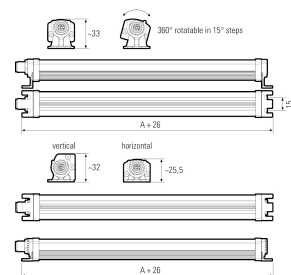
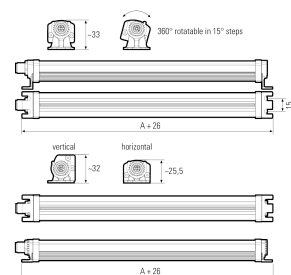
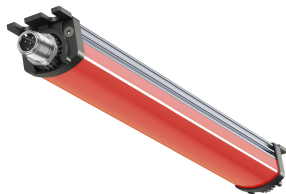


LED surface-mounted light



Product-Nr.	111090-11
EAN:	4260556624471
Model:	SIGNALLED II RGB
Order number:	111090-11
Model:	SIGNALLED II RGB
Type:	LED surface-mounted light
Illuminant:	RGB LED
Power consumption RED:	~1,8 W
Lamp luminous flux RED:	39 lm
Power consumption GREEN:	~1,8 W
Lamp luminous flux GREEN:	18 lm
Power consumption BLUE:	~1,8 W
Lamp luminous flux BLUE:	61 lm
Light distribution:	direct
Light colour:	RGB colour space (at least 2563 colours)
Connected load:	24V DC - 10% +7% (RGB)
Connection (connector):	M12 A-coded
Degree of protection:	IP54
Class of protection:	III
Glare control:	opal white
Beam angle (optics):	120°
Operating temperature:	-30 °C -> +50 °C (-22 °F -> 122 °F)
Lamps lifetime:	> 60.000 h (L80/B10)
Housing material:	aluminium
Cover material:	polycarbonate, soft
Height [B] x Width [C]:	25 mm x 30 mm (~0,98" x ~1,18")
Length [A]:	180 mm (~7,09")
Weight (net):	180 g (~6 oz)
Gross weight:	330 g (~12 oz)
Risk group (DIN EN 62471):	free group
Markings:	CE, UKCA, ETL Listed (5003529), D mark
Dimmable:	no
Mounting accessories:	2 pairs mounting holders (holder for swivel or planar mounting) in delivery scope
Made in:	Germany
Feature:	Signalling via flashing and/or coloured light