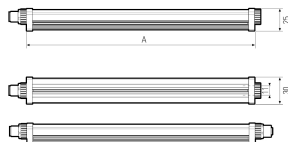
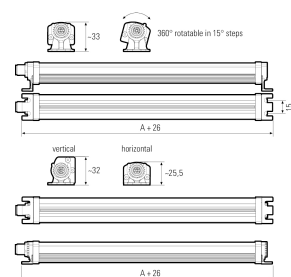
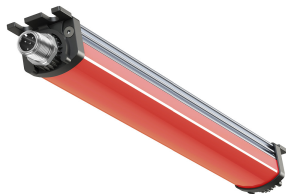


## LED surface-mounted light



<b>Product-Nr.</b>	111090-17
<b>EAN:</b>	4260556624532
<b>Model:</b>	SIGNALLED II RGB
<b>Order number:</b>	111090-17
<b>Model:</b>	SIGNALLED II RGB
<b>Type:</b>	LED surface-mounted light
<b>Illuminant:</b>	RGB LED
<b>Power consumption RED:</b>	~15,8 W
<b>Lamp luminous flux RED:</b>	354 lm
<b>Power consumption GREEN:</b>	~15,8 W
<b>Lamp luminous flux GREEN:</b>	162 lm
<b>Power consumption BLUE:</b>	~15,8 W
<b>Lamp luminous flux BLUE:</b>	558 lm
<b>Light distribution:</b>	direct
<b>Light colour:</b>	RGB colour space (at least 2563 colours)
<b>Connected load:</b>	24V DC - 10% +7% (RGB)
<b>Connection (connector):</b>	M12 A-coded
<b>Degree of protection:</b>	IP54
<b>Class of protection:</b>	III
<b>Glare control:</b>	opal white
<b>Beam angle (optics):</b>	120°
<b>Operating temperature:</b>	-10 °C -> +50 °C (14 °F -> 122 °F)
<b>Lamps lifetime:</b>	> 60.000 h (L80/B10)
<b>Housing material:</b>	aluminium
<b>Cover material:</b>	polycarbonate, soft
<b>Height [B] x Width [C]:</b>	25 mm x 30 mm (~0,98" x ~1,18")
<b>Length [A]:</b>	1520 mm (~59,84")
<b>Weight (net):</b>	950 g (~34 oz)
<b>Gross weight:</b>	1450 g (~51 oz)
<b>Risk group (DIN EN 62471):</b>	free group
<b>Markings:</b>	CE, UKCA, ETL Listed (5003529), D mark
<b>Dimmable:</b>	no
<b>Mounting accessories:</b>	2 pairs mounting holders (holder for swivel or planar mounting) in delivery scope
<b>Made in:</b>	Germany
<b>Feature:</b>	Signalling via flashing and/or coloured light