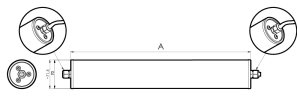


LED surface mounted tube luminaire



Product-Nr.	115010-04
EAN:	4260556624686
Model:	INROLED_70 mit PC Schutzrohr
Order number:	115010-04
Model:	INROLED_70 mit PC Schutzrohr
Type:	LED surface mounted tube luminaire
Illuminant:	SMD LED
Total output incl. driver:	~10 W
Power consumption:	~6,5 W
Lamp luminous flux:	1000 lm
Lamp luminous efficiency:	~155 lm/W
Light distribution:	direct
Light colour:	5600K 3-step MacAdam
Connected load:	90-305V AC \pm 10%, 50-60 Hz
Power supply:	inbuilt
Connection (connector):	Cable entry, internal clamp
Degree of protection:	IP67/IP69K
Class of protection:	I
Glare control:	opal white
Beam angle (optics):	125°
Operating temperature:	-10 °C -> +40 °C (14 °F -> 104 °F)
Colour rendering (Ra):	>85
Lamps lifetime:	> 100.000h (L80/B10)
Housing material:	aluminium inside
Cover material:	polycarbonate, shatterproof
Height [B] x Width [C]:	Ø 70 mm (~2,76")
Length [A]:	354 mm (~13,94")
Weight (net):	900 g (~32 oz)
Gross weight:	1900 g (~67 oz)
Risk group (DIN EN 62471):	free group
Markings:	CE, UKCA
Mounting accessories:	optional
Made in:	Germany
Feature:	cascadable
cascadable:	yes