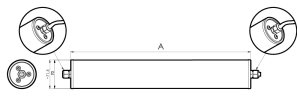


## LED surface mounted tube luminaire



<b>Product-Nr.</b>	115110-04
<b>EAN:</b>	4260556624693
<b>Model:</b>	INROLED_70 mit PC Schutzrohr
Order number:	115110-04
<b>Model:</b>	INROLED_70 mit PC Schutzrohr
<b>Type:</b>	LED surface mounted tube luminaire
<b>Illuminant:</b>	SMD LED
<b>Total output incl. driver:</b>	~14 W
<b>Power consumption:</b>	~11 W
<b>Lamp luminous flux:</b>	1670 lm
<b>Lamp luminous efficiency:</b>	~155 lm/W
<b>Light distribution:</b>	direct
<b>Light colour:</b>	5600K 3-step MacAdam
<b>Connected load:</b>	90-305V AC $\pm$ 10%, 50-60 Hz
<b>Power supply:</b>	inbuilt
<b>Connection (connector):</b>	Cable entry, internal clamp
<b>Degree of protection:</b>	IP67/IP69K
<b>Class of protection:</b>	I
<b>Glare control:</b>	Microprisms
<b>Beam angle (optics):</b>	125°
<b>Operating temperature:</b>	-10 °C -> +40 °C (14 °F -> 104 °F)
<b>Colour rendering (Ra):</b>	>85
<b>Lamps lifetime:</b>	> 100.000h (L80/B10)
<b>Housing material:</b>	aluminium inside
<b>Cover material:</b>	polycarbonate, shatterproof
<b>Height [B] x Width [C]:</b>	Ø 70 mm (~2,76")
<b>Length [A]:</b>	513 mm (~20,2")
<b>Weight (net):</b>	1400 g (~49 oz)
<b>Gross weight:</b>	2500 g (~88 oz)
<b>Risk group (DIN EN 62471):</b>	free group
<b>Markings:</b>	CE, UKCA
<b>Mounting accessories:</b>	optional
<b>Made in:</b>	Germany
<b>Feature:</b>	cascadable
<b>cascadable:</b>	yes