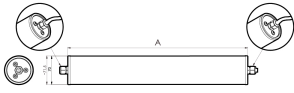


LED surface mounted tube luminaire



Product-Nr.	115310-04
EAN:	4260556624716
Model:	INROLED_70 with PC Protective Tube
Order number:	115310-04
Model:	INROLED_70 with PC Protective Tube
Type:	LED surface mounted tube luminaire
Illuminant:	SMD LED
Total output incl. driver:	~23 W
Power consumption:	~21 W
Lamp luminous flux:	3340 lm
Lamp luminous efficiency:	~155 lm/W
Light distribution:	Direct
Light colour:	5700K 3-step MacAdam
Colour rendering (Ra):	>85
Connected load:	90-305V AC ± 10%, 50-60 Hz
Power supply:	Integrated
Connection (connector):	Cable entry, internal clamp
Degree of protection:	IP67/IP69K
Class of protection:	I
Glare control:	opal white
Beam angle (optics):	125°
Operating temperature:	-10 °C - +40 °C (14 °F - 104 °F)
Lamps lifetime:	> 100,000 h (L80/B10)
Housing material:	aluminium inside
Cover material:	polycarbonate, shatterproof
Height [B] x Width [C]:	Ø 70 mm (~2,76")
Length [A]:	921 mm (~36,26")
Weight (net):	1700 g (~60 oz)
Gross weight:	2400 g (~85 oz)
Risk group (DIN EN 62471):	Free group
Markings:	CE, UKCA
Mounting accessories:	Optional
Made in:	Germany
Feature:	cascadable
cascadable:	yes