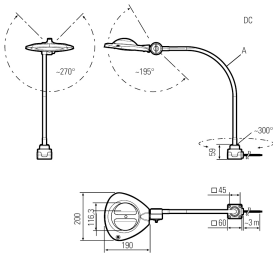




LED magnifying lamp with gooseneck



Product-Nr.	121110-01
EAN:	4260556625638
Model:	CENALED LENS
Order number:	121110-01
Model:	CENALED LENS
Type:	LED magnifying lamp with gooseneck
Illuminant:	LED-Ring, 21 High Power LED, PWM dimmbar
Power consumption:	~8,4 W
Lamp luminous flux:	1277 lm
Lamp luminous efficiency:	152 lm/W
Light distribution:	direct
Light colour:	daylight white (5200 - 5700K)
Connected load:	24V DC \pm 10%
Power supply:	-
Connection (connector):	Connection cable, oil flex, with open cable ends
Degree of protection:	IP54
Class of protection:	III
Beam angle (optics):	120°
Operating temperature:	-10 °C -> +50 °C (14 °F -> 122 °F)
Colour rendering (Ra):	>85
Lamps lifetime:	> 60.000 h (L80/B10)
Housing material:	aluminium (powder finished)
Cover material:	Makrolon®
Flex arm length [A]:	500 mm (19,69")
base height:	59 mm (2,32")
Mounting:	screw-on base
Weight (net):	1500 g (~53 oz)
Gross weight:	2100 g (~74 oz)
Risk group (DIN EN 62471):	free group
Markings:	CE, UKCA, ETL Listed (5003529)
Dimmable:	yes, via push button at the light head, ON/OFF and dimming
Mounting accessories:	magnet holder plate optional
Made in:	Germany
Feature:	LED magnifying light , dimmable, glass magnifier, illuminated, 4 dpt., Ø160 mm, lens cover in delivery scope