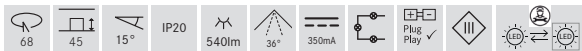
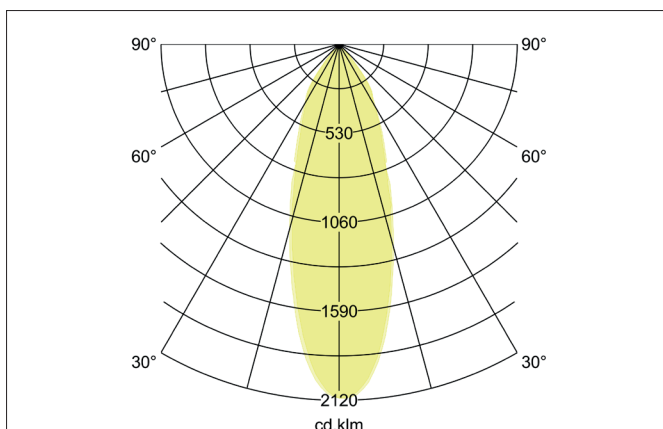
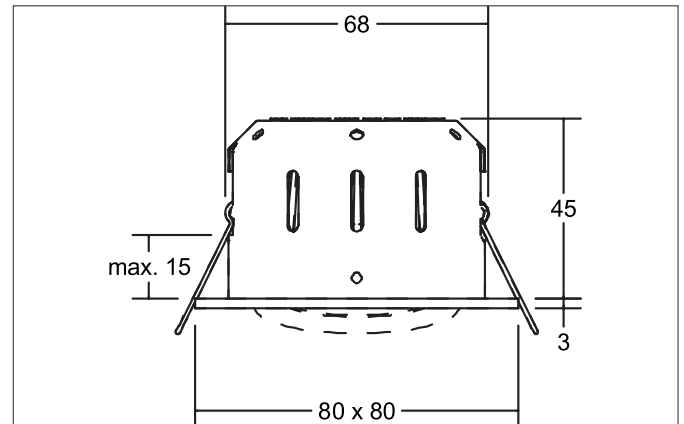
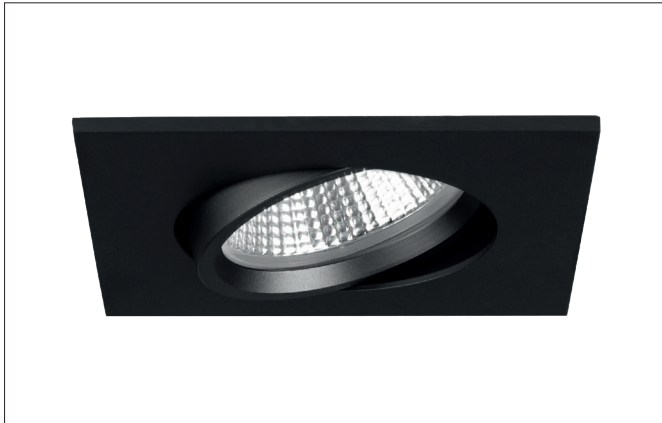



INDIWO68-S LED-Einbaustrahler

Article no. 12295183


Tender

Square LED recessed spotlight, tool-free ceiling installation using installation springs. Ceiling cut-out Ø 68 mm, installation depth 45 mm, length 80 mm, width 80 mm, weight 0.16 kg, silver reflector with rotationally symmetrical deep-wide beam light distribution. Transparent plastic cover, rated luminous flux 540 lm, rated wattage 1 x 6 W, warm white light color, most similar color temperature (CCT) 3,000 K, general color rendering index CRI > 80, service life L80/B20 at 25 °C: 50,000 h, housing material: aluminum / steel / PMMA, color: textured black, permissible ambient temperature (ta): -20 °C - +25 °C, protection class (EN 61140): III, degree of protection (DIN EN 60529): IP20. For connection to an external control gear, which is not included with the luminaire. Dimmable depending on the control gear.

Product Benefits

- Einbaustrahler in quadratischer Bauform aus massivem Aluminium und Schutzkappe zum Direkteinbau in Wärmedämmmaterial.
- Deckenausschnitt 68 mm, Länge 80 mm, Breite 80 mm, Einbautiefe 45 mm, Lichtstrom 540 lm, IP20.
- Bei Verwendung eines geeigneten Konverters dimmbar.
- In gleicher Oberflächenstruktur und in gleichen Farben auch in Ausführung dim2warm und rund verfügbar.


INDIWO68-S LED-Einbaustrahler

Article no. 12295183

Article data	
Article no.	12295183
GTIN	4255752520016
Series name	INDIWO68-S
Short description	LED-Einbaustrahler
Material	Aluminium / Steel / PMMA
Colour	Black
Type of surface	Structure
Shape	Square
Length	80 mm
Width	80 mm
Built-in diameter	68 mm
Installation depth	45 mm
Hight	3 mm
Weight	0.16 kg
Conformance	CE, UKCA

Lighting technology	
Colour temperature	3.000 K
Light colour	White
Light output	Direct
Luminous flux	540 lm
System efficiency	90 lm/W
Colour rendering	CRI > 80
Reflector	Faceted
Reflector colour	silver
Beam angle	36°
Light sharing	Symmetric
Adjustable color temperature	No

Operating technology of the luminaire	
Voltage type	DC
Current	350 mA
Lamp	LED
Lamp holder	Plug&Play
Protection class	III
Degree of protection	IP20
Dimmable	Depending on type of control gear
Control	Depending on driver
Bulb change possible	The light source of this luminaire may only be replaced by the manufacturer or a service technician commissioned by him or a similarly qualified person.
Rated life time L80/B20 at 25 °C	50.000 h
Energy efficiency class	nicht erforderlich

Mounting technology	
Mounting method	Recessed mounting
Place of installation	Ceiling-mounted
Adjustability	Pivoted
Swivel angle	15°
Max. ceiling thickness	15 mm
Material cover	Plastic, transparent
Suitable for through-wiring	Yes, with optional accessories



INDIWO68-S LED-Einbaustrahler
Article no. 12295183

Packing data	
Gross weight	0.198 kg
Length of packaging	100 mm
Packaging width	90 mm
Packaging hight	80 mm
Disposal at end of life	<p>This product must not be disposed of with household waste. You are obliged, to dispose of such electrical waste separately.</p> <p>By disposing of electrical waste and other old or defective electronics separately, you support recycling or other forms of re-use. In that way you help to take care and to avoid that harmful substances get into the environment.</p>


INDIWO68-S LED-Einbaustrahler

Article no. 12295183

Required accessories

Article no.: 17662000

LED-Konverter 350 mA, schaltbar

Power: 1 - 7,2 W, Plug&Play

Dimensions: 68 mm x 35 mm x 21 mm

https://www.brumberg.com/fileadmin/products/Datenblatt_17662000_2021_DE.pdf

Article no.: 17662020

LED-Konverter 350 mA, schaltbar

Power: 1 - 7,2 W, Plug&Play + Anschlussbox

Dimensions: 35 mm x 21 mm

https://www.brumberg.com/fileadmin/products/Datenblatt_17662020_2021_DE.pdf

Article no.: 17663000

LED-Konverter 350 mA, Phasenabschnitt dimmbar

Power: 2,8 - 7 W, Plug&Play

Dimensions: 110 mm x 50 mm x 19 mm

https://www.brumberg.com/fileadmin/products/Datenblatt_17663000_2021_DE.pdf

Article no.: 17663020

LED-Konverter 350 mA, Phasenabschnitt dimmbar

Power: 2,8 - 7 W, Plug&Play + Anschlussbox

Dimensions: 110 mm x 50 mm x 19 mm

https://www.brumberg.com/fileadmin/products/Datenblatt_17663020_2021_DE.pdf

Article no.: 17613000

LED-Konverter 350 mA, schaltbar

Power: 1 - 15 W, Plug&Play

Dimensions: 115 mm x 34 mm x 19 mm

https://www.brumberg.com/fileadmin/products/Datenblatt_17613000_2021_DE.pdf

Article no.: 17613020

LED-Konverter 350 mA, schaltbar

Power: 1 - 15 W, Plug&Play + Anschlussbox

Dimensions: 115 mm x 34 mm x 19 mm

https://www.brumberg.com/fileadmin/products/Datenblatt_17613020_2021_DE.pdf

Article no.: 17621000

LED-Konverter 350 mA, schaltbar

Power: 1 - 21 W, Plug&Play

Dimensions: 128 mm x 50 mm x 13 mm

https://www.brumberg.com/fileadmin/products/Datenblatt_17621000_2021_DE.pdf

Article no.: 17621020

LED-Konverter 350 mA, schaltbar

Power: 1 - 21 W, Plug&Play + Anschlussbox

Dimensions: 128 mm x 50 mm x 13 mm

https://www.brumberg.com/fileadmin/products/Datenblatt_17621020_2021_DE.pdf

Article no.: 17652000

LED-Rundkonverter 350 mA, Phasenabschnitt dimmbar

Power: 4,9 - 7 W, Plug&Play

Dimensions: 51 mm x 24 mm

https://www.brumberg.com/fileadmin/products/Datenblatt_17652000_2021_DE.pdf

Article no.: 17652020

LED-Rundkonverter 350 mA, Phasenabschnitt dimmbar

Power: 4,9 - 7 W, Plug&Play + Anschlussbox

Dimensions: 51 mm x 24 mm

https://www.brumberg.com/fileadmin/products/Datenblatt_17652020_2021_DE.pdf


INDIWO68-S LED-Einbaustrahler

Article no. 12295183

Required accessories
Article no.: 17640000 LED-Konverter 350 mA, Phasenabschnitt dimmbar Power: 4,2 - 10 W, Plug&Play Dimensions: 102 mm x 38 mm x 21 mm https://www.brumberg.com/fileadmin/products/Datenblatt_17640000_2021_DE.pdf
Article no.: 17640020 LED-Konverter 350 mA, Phasenabschnitt dimmbar Power: 4,2 - 10 W, Plug&Play + Anschlussbox Dimensions: 102 mm x 38 mm x 21 mm https://www.brumberg.com/fileadmin/products/Datenblatt_17640020_2021_DE.pdf
Article no.: 17648000 LED-Konverter 350 mA, Phasenabschnitt dimmbar Power: 0,7 - 17 W, Plug&Play Dimensions: 166 mm x 46 mm x 34 mm https://www.brumberg.com/fileadmin/products/Datenblatt_17648000_2021_DE.pdf
Article no.: 17648020 LED-Konverter 350 mA, Phasenabschnitt dimmbar Power: 0,7 - 17 W, Plug&Play + Anschlussbox Dimensions: 166 mm x 46 mm x 34 mm https://www.brumberg.com/fileadmin/products/Datenblatt_17648020_2021_DE.pdf
Article no.: 17657000 LED-Konverter 350 mA, 1-10 V dimmbar (analog) Power: 5,2 - 18 W, Plug&Play Dimensions: 110 mm x 52 mm x 22 mm https://www.brumberg.com/fileadmin/products/Datenblatt_17657000_2021_DE.pdf
Article no.: 17682000 LED-Konverter 350 mA, DALI dimmbar (digital) Power: 1,8 - 18,5 W, Plug&Play Dimensions: 146.5 mm x 43.5 mm x 22 mm https://www.brumberg.com/fileadmin/products/Datenblatt_17682000_2021_DE.pdf
Article no.: 17682020 LED-Konverter 350 mA, DALI dimmbar (digital) Power: 1,8 - 18,5 W, Plug&Play + Anschlussbox Dimensions: 146.5 mm x 43.5 mm x 22 mm https://www.brumberg.com/fileadmin/products/Datenblatt_17682020_2021_DE.pdf
Article no.: 17683000 LED-Konverter 350 mA, DALI dimmbar (digital) Power: 3,5 - 17 W, Plug&Play Dimensions: 110.5 mm x 52 mm x 22 mm https://www.brumberg.com/fileadmin/products/Datenblatt_17683000_2021_DE.pdf
Article no.: 17683020 LED-Konverter 350 mA, DALI dimmbar (digital) Power: 3,5 - 17 W, Plug&Play + Anschlussbox Dimensions: 110.5 mm x 52 mm x 22 mm https://www.brumberg.com/fileadmin/products/Datenblatt_17683020_2021_DE.pdf
Article no.: 17684000 LED-Konverter 350 mA, DALI dimmbar (digital) Power: 2,8 - 7 W, Plug&Play Dimensions: 130 mm x 42 mm x 22 mm https://www.brumberg.com/fileadmin/products/Datenblatt_17684000_2021_DE.pdf


INDIWO68-S LED-Einbaustrahler

Article no. 12295183

Required accessories

Article no.: 17684020

LED-Konverter 350 mA, DALI dimmbar (digital)

Power: 2,8 - 7 W, Plug&Play + Anschlussbox

Dimensions: 130 mm x 42 mm x 22 mm

https://www.brumberg.com/fileadmin/products/Datenblatt_17684020_2021_DE.pdf

Article no.: 17658000

LED-Rundkonverter 350 mA, DALI dimmbar (digital)

Power: 2,1 - 9 W, Plug&Play

Dimensions: 56 mm x 25 mm

https://www.brumberg.com/fileadmin/products/Datenblatt_17658000_2021_DE.pdf

Article no.: 17658020

LED-Rundkonverter 350 mA, DALI dimmbar (digital)

Power: 2,1 - 9 W, Plug&Play + Anschlussbox

Dimensions: 56 mm x 25 mm

https://www.brumberg.com/fileadmin/products/Datenblatt_17658020_2021_DE.pdf

Article no.: 17671000

LED-Konverter 350mA, ZigBee dimmbar

Power: 3,5 - 18,5 W, Plug&Play

Dimensions: 146.5 mm x 44 mm x 30 mm

https://www.brumberg.com/fileadmin/products/Datenblatt_17671000_2021_DE.pdf

Article no.: 17671020

LED-Konverter 350mA, ZigBee dimmbar

Power: 3,5 - 18,5 W, Plug&Play + Anschlussbox

Dimensions: 146.5 mm x 44 mm x 30 mm

https://www.brumberg.com/fileadmin/products/Datenblatt_17671020_2021_DE.pdf

Article no.: 17672000

LED-Konverter 350mA, Casambi dimmbar

Power: 3,5 - 18,5 W, Plug&Play

Dimensions: 146.5 mm x 44 mm x 30 mm

https://www.brumberg.com/fileadmin/products/Datenblatt_17672000_2021_DE.pdf

Article no.: 17672020

LED-Konverter 350mA, Casambi dimmbar

Power: 3,5 - 18,5 W, Plug&Play + Anschlussbox

Dimensions: 146.5 mm x 44 mm x 30 mm

https://www.brumberg.com/fileadmin/products/Datenblatt_17672020_2021_DE.pdf
Optional accessories

Article no.: 3835

Plug&Play-Verlängerungsleitung 350 mA

Dimensions: 500 mm

https://www.brumberg.com/fileadmin/products/Datenblatt_00003835_2021_DE.pdf

Article no.: 3836

Plug&Play-Verlängerungsleitung 350 mA

Dimensions: 1,000 mm

https://www.brumberg.com/fileadmin/products/Datenblatt_00003836_2021_DE.pdf

Article no.: 3837

Plug&Play-Verlängerungsleitung 350 mA

Dimensions: 2,000 mm

https://www.brumberg.com/fileadmin/products/Datenblatt_00003837_2021_DE.pdf