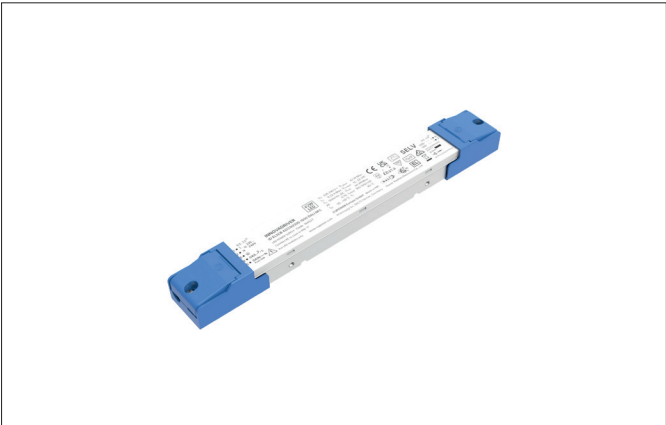




LINEO LED-driver 700 mA, DALI
Article no. 17813000



Entwurf



Tender
LED-driver 700 mA, DALI, white. Dieser Konverter ist durch Sicherungseinrichtungen gegen Überspannung und Kurzschluss sowie thermische und elektrische Überlastung geschützt. Die Eingangs- und die Ausgangsklemme ist für Leitungen mit einem Querschnitt von 0,5 bis zu 1,5 mm² geeignet. Power: 42 W.

Article data	
Article no.	17813000
GTIN	4255752526094
Series name	LINEO
Short description	LED-driver 700 mA, DALI
Material	Steel
Colour	white
Shape	Rectangular
Length	264 mm
Width	34 mm
Height	24 mm
Scope of delivery	Plug&Play-Ausgangsleitung, Länge 400 mm und CCT-Schalter
Weight	0.16 kg
stamp	ENEC 25, EL
Conformance	CE


LINEO LED-driver 700 mA, DALI

Article no. 17813000

Operating technology of driver	
AC nominal voltage min	198 V
AC nominal voltage max	264 V
Frequency min	47 Hz
Frequency max	63 Hz
DC nominal voltage min	176 V
DC nominal voltage max	276 V
Protection class	I
Degree of protection	IP20
Power min	1 W
Power max.	42 W
Output_ripple_current	5
Starting current	24,3 A, 175 µs
Suitable for emergency lighting	Yes
measure point (tc)	80 °C
Version	Plug&Play
Power factor	0.9
max. no. lights on B16 A	39
Output voltage max	52.00 V
Output voltage min.	15.00 V
Flicker value Pst LM	1.00
Control	DALI
Number of poles	3
Environment temperature (ta)	-25 °C bis +40 °C
Measure point (tc)	max. +80 °C
Output current	700-1050 mA

Packing data	
Gross weight	0.18 kg
Length of packaging	330 mm
Packaging width	50 mm
Packaging height	133 mm
Disposal at end of life	<p>This product must not be disposed of with household waste. You are obliged, to dispose of such electrical waste separately.</p> <p>By disposing of electrical waste and other old or defective electronics separately, you support recycling or other forms of re-use. In that way you help to take care and to avoid that harmful substances get into the environment.</p>