

Han ESS 10 Pos. M Insert Double Cage Cla

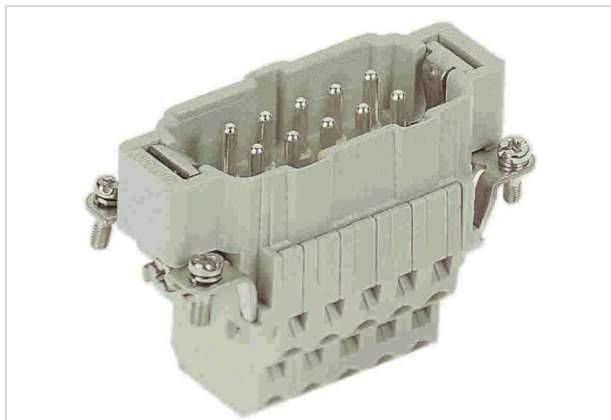


Image is for illustration purposes only. Please refer to product description.

Part number	09 33 010 2672
Specification	Han ESS 10 Pos. M Insert Double Cage Cla
HARTING eCatalogue	https://harting.com/09330102672

Identification

Category	Inserts
Series	Han [®] ESS

Version

Termination method	Cage-clamp termination
Gender	Male
Size	10 B
Number of contacts	10
PE contact	Yes
Details	two terminations per contact for hoods/housings high construction only

Technical characteristics

Conductor cross-section	0.14 ... 2.5 mm ²
Conductor cross-section [AWG]	AWG 26 ... AWG 14
Rated current	16 A
Rated voltage	500 V
Rated impulse voltage	6 kV
Pollution degree	3
Rated voltage acc. to UL	600 V
Rated voltage acc. to CSA	600 V
Insulation resistance	>10 ¹⁰ Ω
Contact resistance	≤3 mΩ



Pushing Performance
Since 1945

Technical characteristics

Stripping length	9 ... 11 mm
Tightening torque	1.2 Nm PE screw M4
Recommended screw driver	Slotted 0.8 x 4.5 PH2
Limiting temperature	-40 ... +125 °C
Mating cycles	≥500

Material properties

Material (insert)	Polycarbonate (PC)
Colour (insert)	RAL 7032 (pebble grey)
Material (contacts)	Copper alloy
Surface (contacts)	Silver plated
Material flammability class acc. to UL 94	V-0
RoHS	compliant with exemption
RoHS exemptions	6(c): Copper alloy containing up to 4 % lead by weight
ELV status	compliant with exemption
China RoHS	50
REACH Annex XVII substances	Not contained
REACH ANNEX XIV substances	Not contained
REACH SVHC substances	Yes
REACH SVHC substances	Lead
ECHA SCIP number	5dbb3851-b94e-4e88-97a1-571845975242
California Proposition 65 substances	Yes
California Proposition 65 substances	Lead Nickel
Fire protection on railway vehicles	EN 45545-2 (2020-08)
Requirement set with Hazard Levels	R22 (HL 1-3) R23 (HL 1-3)

Specifications and approvals

Specifications	IEC 60664-1 IEC 61984
UL / CSA	UL 1977 ECBT2.E235076 CSA-C22.2 No. 182.3 ECBT8.E235076
Approvals	DNV GL



Pushing Performance
Since 1945

Commercial data

Packaging size	1
Net weight	84.3 g
Country of origin	Romania
European customs tariff number	85366990
GTIN	5713140051065
eCl@ss	27440205 Contact insert for industrial connectors
ETIM	EC000438
UNSPSC 24.0	39121522