

## Han 10HvE-F-c

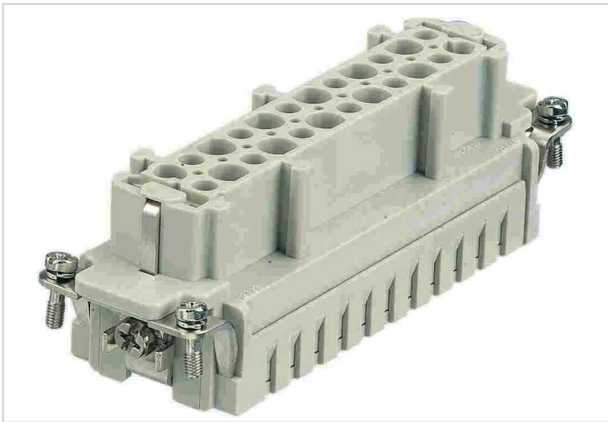


Image is for illustration purposes only. Please refer to product description.

Part number	09 34 010 2702
Specification	Han 10HvE-F-c
HARTING eCatalogue	<a href="https://harting.com/09340102702">https://harting.com/09340102702</a>

### Identification

Category	Inserts
Series	Han Hv E <sup>®</sup>

### Version

Termination method	Crimp termination
Gender	Female
Size	24 B
Number of contacts	12
Number of power contacts	10
Number of special contacts	2
Specification of special contacts	Relay contact
PE contact	Yes
Details	Please order crimp contacts separately.

### Technical characteristics

Conductor cross-section	0.5 ... 4 mm <sup>2</sup>
Conductor cross-section [AWG]	AWG 20 ... AWG 12
Rated current	16 A
Rated voltage	830 V
Rated impulse voltage	8 kV
Pollution degree	3
Rated voltage acc. to UL	600 V
Rated voltage acc. to CSA	600 V

## Technical characteristics

Insulation resistance	>10 <sup>10</sup> Ω
Tightening torque	1.2 Nm PE screw M4
Recommended screw driver	Slotted 0.8 x 4.5 PH2
Limiting temperature	-40 ... +125 °C
Mating cycles	≥500

## Material properties

Material (insert)	Polycarbonate (PC)
Colour (insert)	RAL 7032 (pebble grey)
Material flammability class acc. to UL 94	V-0
RoHS	compliant
ELV status	compliant
China RoHS	e
REACH Annex XVII substances	Not contained
REACH ANNEX XIV substances	Not contained
REACH SVHC substances	Yes
REACH SVHC substances	Potassium 1,1,2,2,3,3,4,4,4-nonafluorobutane-1-sulphonate
California Proposition 65 substances	Yes
California Proposition 65 substances	Lead Nickel
Fire protection on railway vehicles	EN 45545-2 (2020-08)
Requirement set with Hazard Levels	R26

## Specifications and approvals

Specifications	IEC 60664-1 IEC 61984
UL / CSA	UL 1977 ECBT2.E235076

## Commercial data

Packaging size	1
Net weight	77.7 g
Country of origin	Germany
European customs tariff number	85366990
GTIN	5713140571631



**Pushing Performance**  
Since 1945

## Commercial data

eCl@ss	27440205 Contact insert for industrial connectors
UNSPSC 24.0	39121522