

Han K6/6-F-c

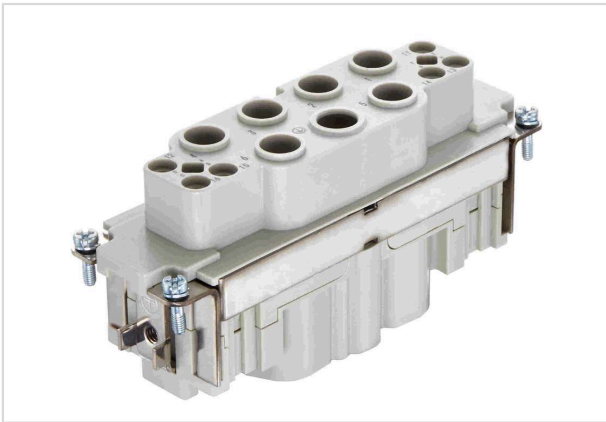


Image is for illustration purposes only. Please refer to product description.

Part number	09 38 012 3102
Specification	Han K6/6-F-c
HARTING eCatalogue	https://harting.com/09380123102

Identification

Category	Inserts
Series	Han-Com [®]
Identification	Han [®] K 6/6

Version

Termination method	Crimp termination
Gender	Female
Size	24 B
Number of contacts	12
Number of signal contacts	6
Number of power contacts	6
PE contact	Yes
Details	Please order crimp contacts separately. Please order coding pins separately.

Technical characteristics

Conductor cross-section	10 ... 25 mm ² Power 0.14 ... 2.5 mm ² Signal
Wire outer diameter	≤12.8 mm
Rated current	100 A
Rated voltage	690 V
Rated impulse voltage	8 kV
Pollution degree	3



Pushing Performance
Since 1945

Technical characteristics

Rated current (signal)	16 A
Rated voltage (signal)	400 V
Rated impulse voltage (signal)	6 kV
Pollution degree (signal)	3
Insulation resistance	$>10^{10} \Omega$
Limiting temperature	-40 ... +125 °C
Mating cycles	≥ 500

Material properties

Material (insert)	Polycarbonate (PC)
Colour (insert)	RAL 7032 (pebble grey)
Material flammability class acc. to UL 94	V-0
RoHS	compliant
ELV status	compliant
China RoHS	e
REACH Annex XVII substances	Not contained
REACH ANNEX XIV substances	Not contained
REACH SVHC substances	Not contained
California Proposition 65 substances	Not contained
Fire protection on railway vehicles	EN 45545-2 (2020-08)
Requirement set with Hazard Levels	R22 (HL 1-3) R23 (HL 1-3)

Specifications and approvals

Specifications	IEC 60664-1 IEC 61984
Approvals	DNV GL

Commercial data

Packaging size	1
Net weight	118.4 g
Country of origin	Romania
European customs tariff number	85366990
GTIN	5713140186446



Pushing Performance
Since 1945

Commercial data

eCl@ss 27440205 Contact insert for industrial connectors

ETIM EC000438

UNSPSC 24.0 39121522
