

## Han K 8/24 Pos. F Insert Crimp

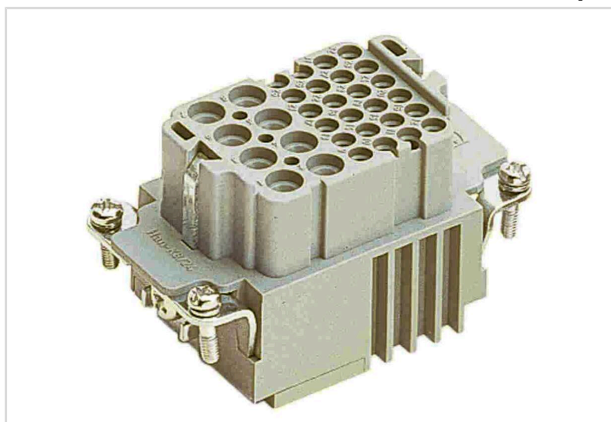


Image is for illustration purposes only. Please refer to product description.

Part number	09 38 032 3101
Specification	Han K 8/24 Pos. F Insert Crimp
HARTING eCatalogue	<a href="https://harting.com/09380323101">https://harting.com/09380323101</a>

### Identification

Category	Inserts
Series	Han-Com <sup>®</sup>
Identification	Han <sup>®</sup> K 8/24

### Version

Termination method	Crimp termination
Gender	Female
Size	10 B
Number of contacts	32
Number of signal contacts	24
Number of power contacts	8
PE contact	Yes
Details	Please order crimp contacts separately.

### Technical characteristics

Conductor cross-section	0.5 ... 4 mm <sup>2</sup> Power 0.14 ... 2.5 mm <sup>2</sup> Signal
Rated current	16 A
Rated voltage conductor-earth	230 V
Rated voltage conductor-conductor	400 V
Rated impulse voltage	4 kV
Pollution degree	3
Rated current (signal)	10 A



Pushing Performance  
Since 1945

## Technical characteristics

Rated voltage (signal)	160 V
Rated impulse voltage (signal)	2.5 kV
Pollution degree (signal)	3
Rated current acc. to UL	16 A
Rated voltage acc. to UL	600 V
Rated current acc. to UL (signal)	10 A
Rated voltage acc. to UL (signal)	600 V
Rated current acc. to CSA	16 A
Rated voltage acc. to CSA	300 V
Rated current acc. to CSA (signal)	10 A
Rated voltage acc. to CSA (signal)	300 V
Insulation resistance	$>10^{10} \Omega$
Tightening torque	1.2 Nm PE screw M4
Recommended screw driver	Slotted 0.8 x 4.5 PH2
Limiting temperature	-40 ... +125 °C
Mating cycles	$\geq 500$

## Material properties

Material (insert)	Polyamide (PA)
Colour (insert)	RAL 7032 (pebble grey)
Material flammability class acc. to UL 94	HB
RoHS	compliant
ELV status	compliant
China RoHS	e
REACH Annex XVII substances	Not contained
REACH ANNEX XIV substances	Not contained
REACH SVHC substances	Not contained
California Proposition 65 substances	Not contained

## Specifications and approvals

Specifications	IEC 60664-1 IEC 61984
UL / CSA	UL 1977 ECBT2.E235076 CSA-C22.2 No. 182.3 ECBT8.E235076



**Pushing Performance**  
Since 1945

## Specifications and approvals

Approvals	DNV GL
-----------	--------

## Commercial data

Packaging size	1
Net weight	11.52 g
Country of origin	Romania
European customs tariff number	85366990
GTIN	5713140056497
eCl@ss	27440205 Contact insert for industrial connectors
ETIM	EC000438
UNSPSC 24.0	39121522