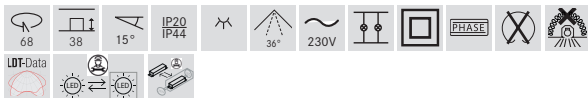
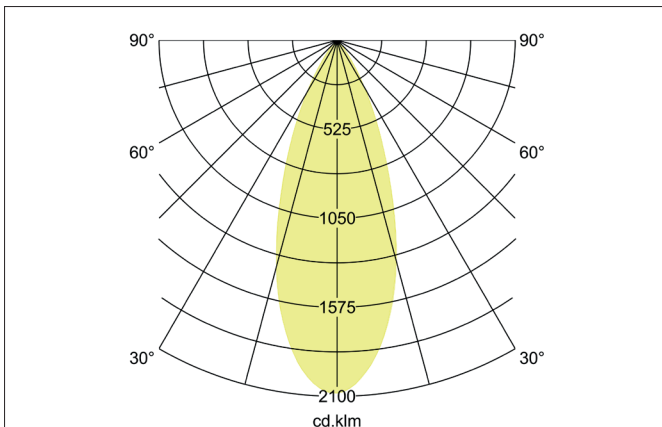
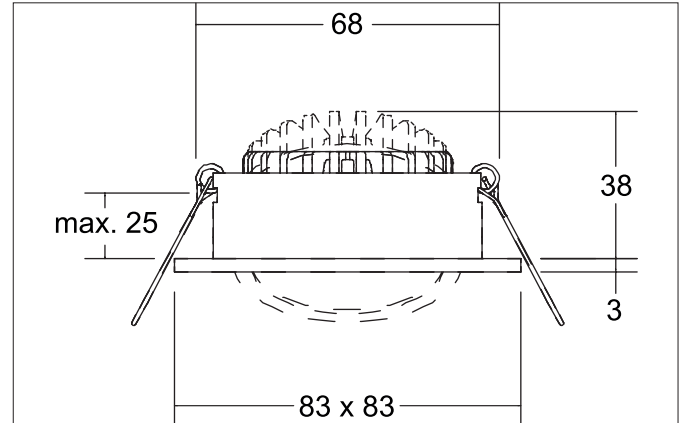
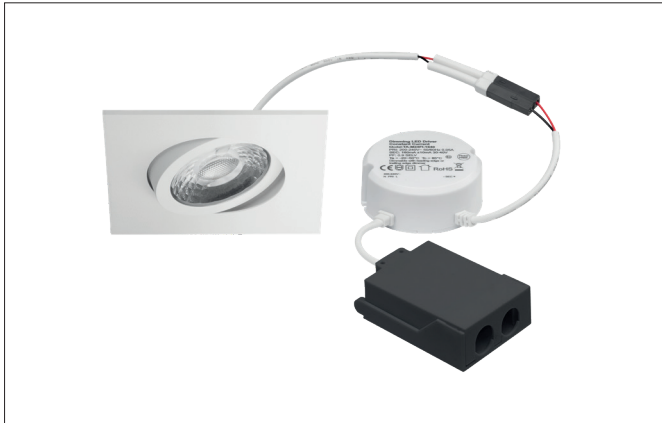




**ABACO-S LED recessed spotlight set, trailing edge dimmable, IP44**

Article no. 39415173



**Tender**  
LED recessed spotlight set, trailing edge dimmable, IP44, Square. Toolless ceiling installation by installation springs. Ceiling cut-out Ø 68 mm, Installation depth 38 mm, Length 83 mm, Width 83 mm, Weight 0,2 kg, Reflector silver with rotationsymmetrical, deep, wide distributed light intensity. Cover plastic, transparent Luminous flux 1.010 lm, Power 1 x 8 W, Light colour warm white, Correlated color temperature (CCT) 3.000 K, Colour rendering index CRI > 80, Rated life time L80/B50 at 25 °C: 50.000 h, Housing material: Aluminium / PMMA, Colour: white structure, Permissible ambient temperature (ta): -20 °C up to +25 °C, Protection class (EN 61140): II, Degree of protection (DIN EN 60529): IP44. With electronic driver, Trailing-edge phase dimmable.

**Product Benefits**

- Protection class IP44 for indoor damp locations
- Standard ceiling cut-out 68 mm - low installation depth 40 mm
- Dimmable as standard via trailing edge phase control (supplied as a set)


**ABACO-S LED recessed spotlight set, trailing edge dimmable, IP44**

Article no. 39415173

| Article data           |  |
|------------------------|--|
| Article no.            | 39415173   |
| GTIN                   | 4255752500049  |
| Series name            | ABACO-S  |
| Short description      | LED recessed spotlight set, trailing edge dimmable, IP44 |
| Material               | Aluminium / PMMA   |
| Colour                 | white structure  |
| Type of surface        | Structure  |
| Shape                  | Square   |
| Length                 | 83 mm  |
| Width                  | 83 mm  |
| Built-in diameter min. | 67 mm  |
| Built-in diameter max. | 68 mm  |
| Installation depth     | 38 mm  |
| Hight                  | 3 mm   |
| Scope of delivery      | incl. connection box, 3-pole for through-wiring          |
| Weight                 | 0.2 kg   |
| D licence plate        | No   |
| Conformance            | CE, UKCA   |

| Lighting technology          |           |
|------------------------------|-----------|
| Colour temperature           | 3.000 K   |
| Light colour                 | white     |
| Light output                 | Direct    |
| Luminous flux                | 1,010 lm  |
| System efficiency            | 126 lm/W  |
| Colour rendering             | CRI > 80  |
| Reflector                    | Faceted   |
| Reflector colour             | silver    |
| Beam angle                   | 36°       |
| Light sharing                | Symmetric |
| Adjustable color temperature | No        |

| Operating technology of the luminaire |  |
|---------------------------------------|--|
| System output                         | 8 W  |
| Voltage type                          | AC   |
| AC nominal voltage max                | 230 V  |
| Frequency max                         | 50 Hz  |
| Lamp                                  | LED  |
| Protection class                      | II   |
| Protection class on the ceiling side  | IP20   |
| Degree of protection                  | IP44   |
| Dimmable                              | Yes  |
| Control                               | Trailing-edge phase  |
| Bulb change possible                  | The light source of this luminaire may only be replaced by the manufacturer or a service technician commissioned by him or a similarly qualified person. |
| Rated life time L80/B50 at 25 °C      | 50.000 h   |
| Energy efficiency class               | not required   |


**ABACO-S LED recessed spotlight set, trailing edge dimmable, IP44**

Article no. 39415173

| Mounting technology         |   |
|-----------------------------|---|
| Mounting method             | Recessed mounting                         |
| Place of installation       | Ceiling-mounted                           |
| Adjustability               | Pivoted                                   |
| Swivel angle                | 15°                                       |
| Max. ceiling thickness      | 25 mm                                     |
| Further references          | No cover with thermal insulation material |
| Material cover              | Plastic, transparent                      |
| Circlip                     | Without circlip                           |
| Suitable for through-wiring | Yes                                       |

| Packing data            |  |
|-------------------------|--|
| Gross weight            | 0.26 kg  |
| Length of packaging     | 105 mm   |
| Packaging width         | 105 mm   |
| Packaging height        | 90 mm  |
| Disposal at end of life | <p>This product must not be disposed of with household waste. You are obliged, to dispose of such electrical waste separately.</p> <p>By disposing of electrical waste and other old or defective electronics separately, you support recycling or other forms of re-use. In that way you help to take care and to avoid that harmful substances get into the environment.</p> |

| Optional accessories  |  |
|---|--|
| Article no.: 5327   |  |
| Leaf spring set   |  |
| <a href="https://www.brumberg.com/fileadmin/products/Datenblatt_00532700_2021_DE.pdf">https://www.brumberg.com/fileadmin/products/Datenblatt_00532700_2021_DE.pdf</a> |  |