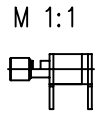
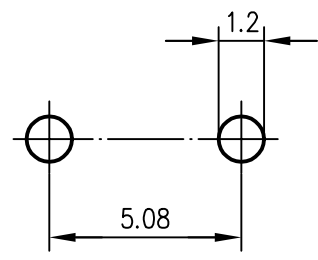
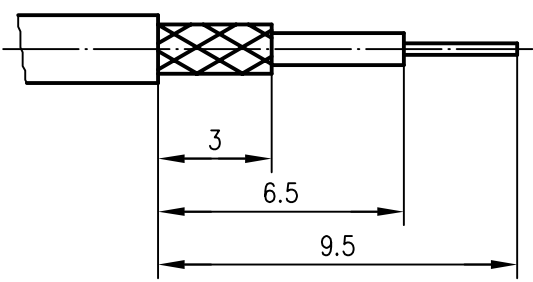


Abisoliermaße / stripping instruction

Montagebohrungen / panel piercings



M 1:1


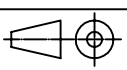
Gehäuse / Housing
Isolierung / Insulator

CuZn39Pb3
PTFE

Cu2Ni5Au0.2

f. Kabel / Cable

RG-178B/U
RG-196A/U

				96	Datum/date	Name/name	Werkstoff/ material
				gez./drawn	24.07.	HM	
				gepr./appr.	24.07.96	BJ	Oberfläche/ finish
				Norm/stand.			
				Maßstab/scale	Benennung/title		
				5:1 (1:1)	Kabelwinkelanschluss Angle Cable Terminator		
				untol. Maße/ dim. without tolerances according to	Untert./doc.type	Zeichnungsnr./drawing no.	
				K	H01000A0221		 Maße/dimensions: mm Original: DIN A4
				Ersatz für/ replaces	EW940003-00		