

Mechanical characteristics

cables
 assembly code
 centre conductor
 outer conductor
 mating life

Components

centre contact
 outer contact
 crimp ferrule
 insulator

Electrical characteristics

impedance
 frequency
 voltage proof
 insulation resistance
 contact resistance
 centre contact
 outer contact

Environmental

RoHS compliant

Mechanische Eigenschaften

Kabel
 Montageanleitung
 Innenleiter
 Außenleiter
 Steckzyklen

Bauteile

Innenkontakt
 Außenkontakt
 Crimprohr
 Isolierung

Elektrische Eigenschaften

Wellenwiderstand
 Frequenz
 Prüfspannung
 Isolationswiderstand
 Durchgangswiderstand
 Innenkontakt
 Außenkontakt

Umgebung

RoHS konform

Low Loss 1.05/2.95

B0801
 crimp
 crimp
 >500

Materials / Material

CuNi1Pb1P
 CuZn39Pb3
 Cu
 PP

Finish / Oberfläche

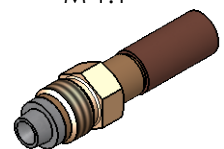
Cu2Ag5
 Cu2Ni5
 Ni5

50 Ω
 0-2 GHz
 1 kV_{eff} / 50 Hz
 ≥ 5 GΩ

≤ 10 mΩ
 ≤ 5 mΩ

2011/65/EU

M 1:1



| | | | | | | | |
|---|-------------------------------|-------------|------------|--------------------------------------|-------------|----------------------------|---------------------|
| Änd./ rev. index | Änderungs-Nr. / revision code | Datum/ date | Name/ name | gez./ drawn | Datum/ date | Name/ name | Gewicht/ weight [g] |
| | | | | | 06.03.2018 | MA | |
| | | | | gepr./ appr. | 03.04.2018 | HR | ca./approx. 4,8 |
| Maßstab/ scale | | | | Benennung/ title | | | |
| 2:1 (1:1) | | | | FME Straight Jack FME-Kabelbuchse | | | |
| untol. Maße/ dim. without tolerances according to | | | | Untert./ doc. type | | Zeichnungsnr./ drawing no. | |
| | | | | K | | J01701A0004 | |
| | | | | Ersatz für/ replaces | | | |
| | | | | | | | |
| | | | | | | | |
| | | | | Maße/ dimensions: mm | | | |
| | | | | Original : DIN A4 | | | |
| | | | | Blatt/ sheet 1 von/ of 1 | | | |