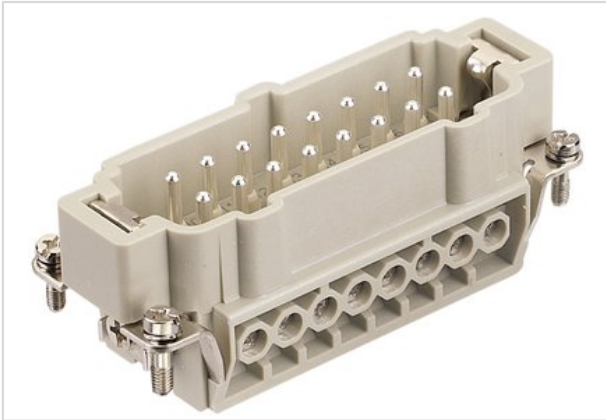


## Han E 16 Pos. M Insert Screw



Part number	09 33 016 2601
Specification	Han E 16 Pos. M Insert Screw
HARTING eCatalogue	<a href="https://b2b.harting.com/09330162601">https://b2b.harting.com/09330162601</a>

### Identification

Category	Inserts
Series	Han E®

### Version

Termination method	Screw termination
Gender	Male
Size	16 B
With wire protection	Yes
Number of contacts	16
PE contact	Yes

### Technical characteristics

Conductor cross-section	0.75 ... 2.5 mm <sup>2</sup>
Conductor cross-section	AWG 18 ... AWG 14
Rated current	16 A
Rated voltage	500 V
Rated impulse voltage	6 kV
Pollution degree	3
Rated voltage acc. to UL	600 V
Rated voltage acc. to CSA	600 V
Insulation resistance	≥10 <sup>10</sup> Ω
Contact resistance	≤1 mΩ
Limiting temperature	-40 ... +125 °C
Stripping length	7.5 mm
Tightening torque	0.5 Nm
Mating cycles	≥500



Pushing Performance

## Material properties

Material (insert)	Polycarbonate
Colour (insert)	RAL 7032 (pebble grey)
Material (contacts)	Copper alloy
Surface (contacts)	Silver plated
Material flammability class acc. to UL 94	V-0
RoHS	compliant with exemption
RoHS exemptions	6c: Copper alloy containing up to 4 % lead by weight
ELV status	compliant with exemption
China RoHS	50
REACH Annex XVII substances	No
REACH ANNEX XIV substances	No
REACH SVHC substances	Yes
REACH SVHC substances	Lead

## Specifications and approvals

Specifications	EN 60664-1 IEC 61984
Approvals	DNV GL
UL / CSA	UL 1977 ECBT2.E235076 UL 2237 PVVA2.E318390 CSA-C22.2 No. 182.3 PVVA8.E318390

## Commercial data

Packaging size	1
Net weight	85.5 g
Country of origin	Germany
European customs tariff number	85366990
eCl@ss	27440205 Contact insert for industrial connectors