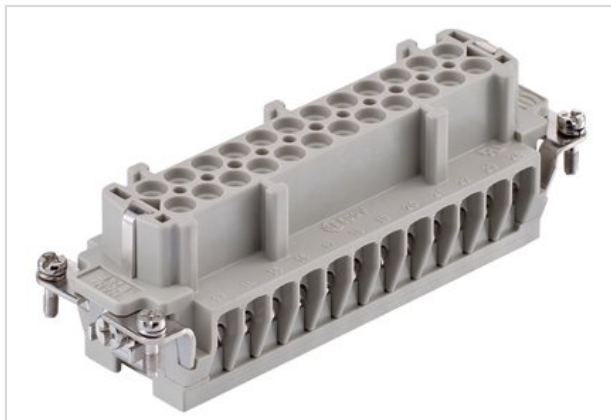


## Han 24E-F-Screw Fe(Au) / CuNi Type J



Part number	09 33 024 2791
Specification	Han 24E-F-Screw Fe(Au) / CuNi Type J
HARTING eCatalogue	<a href="https://b2b.harting.com/09330242791">https://b2b.harting.com/09330242791</a>

### Identification

Category	Inserts
Series	Han <sup>®</sup> Thermocouple
Identification	Han E <sup>®</sup>

### Version

Termination method	Screw termination
Gender	Female
Size	24 B
With wire protection	Yes
Number of contacts	24
PE contact	Yes

### Technical characteristics

Conductor cross-section	1 ... 2.5 mm <sup>2</sup>
Rated current	16 A
Rated voltage	400 V
Rated impulse voltage	6 kV
Pollution degree	3
Insulation resistance	≥10 <sup>10</sup> Ω
Limiting temperature	-40 ... +125 °C
Tightening torque	0.5 Nm
Mating cycles	≥500

### Material properties

Material (insert)	Polycarbonate
Colour (insert)	RAL 7032 (pebble grey)
Material flammability class acc. to UL 94	V-0
RoHS	compliant with exemption



Pushing Performance

## Material properties

RoHS exemptions	6c: Copper alloy containing up to 4 % lead by weight
ELV status	compliant with exemption
China RoHS	50
REACH Annex XVII substances	No
REACH ANNEX XIV substances	No
REACH SVHC substances	Yes
REACH SVHC substances	Lead

## Specifications and approvals

Specifications	EN 60664-1 IEC 61984
Approvals	DNV GL

## Commercial data

Packaging size	1
Net weight	127.84 g
Country of origin	Germany
European customs tariff number	85366990