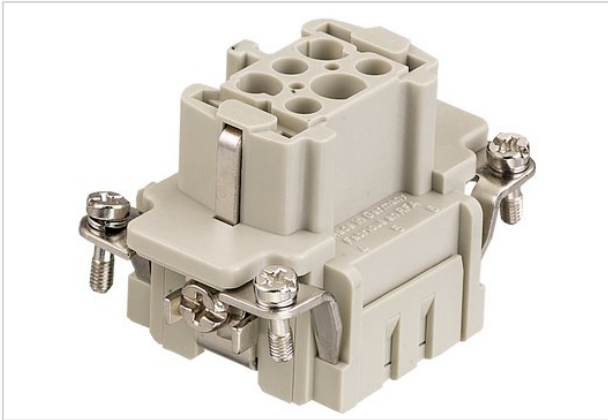


## Han 6E HMC-F-c



Part number	09 33 206 2702
Specification	Han 6E HMC-F-c
HARTING eCatalogue	<a href="https://b2b.harting.com/09332062702">https://b2b.harting.com/09332062702</a>

### Identification

Category	Inserts
Series	Han E <sup>®</sup> HMC

### Version

Termination method	Crimp termination
Gender	Female
Size	6 B
Number of contacts	6
PE contact	Yes
Details	Please order crimp contacts separately.

### Technical characteristics

Conductor cross-section	0.14 ... 4 mm <sup>2</sup>
Conductor cross-section	AWG 26 ... AWG 12
Rated current	16 A
Rated voltage	500 V
Rated impulse voltage	6 kV
Pollution degree	3
Insulation resistance	≥10 <sup>10</sup> Ω
Limiting temperature	-40 ... +125 °C
Mating cycles with other HMC components	≥10,000

### Material properties

Material (insert)	Polycarbonate
Colour (insert)	RAL 7032 (pebble grey)
Material flammability class acc. to UL 94	V-0
RoHS	compliant
ELV status	compliant



Pushing Performance

## Material properties

China RoHS	e
REACH Annex XVII substances	No
REACH ANNEX XIV substances	No
REACH SVHC substances	No

## Specifications and approvals

Specifications	EN 60664-1
	IEC 61984
Approvals	DNV GL

## Commercial data

Packaging size	1
Net weight	38.68 g
Country of origin	Germany
European customs tariff number	85366990
eCl@ss	27440205 Contact insert for industrial connectors