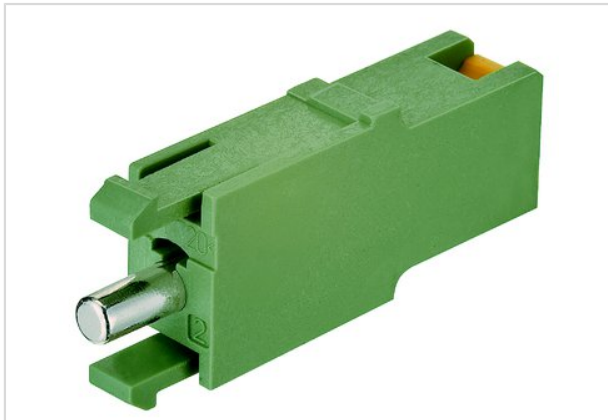


Han-Yellock PE-Contact-Chamber



Part number	11 05 001 2601
Specification	Han-Yellock PE-Contact-Chamber
HARTING eCatalogue	https://b2b.harting.com/11050012601

Identification

Category	Contacts
Series	Han-Yellock®
Type of contact	PE contact chamber

Version

Termination method	Han-Quick Lock® termination
Gender	Male

Technical characteristics

Conductor cross-section	0.5 ... 2.5 mm ²
Conductor cross-section	AWG 20 ... AWG 14
Operating current	≤20 A
Contact resistance	≤2 mΩ
Stripping length	10 mm

Material properties

Material (contacts)	Copper alloy
Surface (contacts)	Silver plated
RoHS	compliant with exemption
RoHS exemptions	6c: Copper alloy containing up to 4 % lead by weight
ELV status	compliant with exemption
China RoHS	50
REACH Annex XVII substances	No
REACH ANNEX XIV substances	No
REACH SVHC substances	Yes
REACH SVHC substances	Lead

Specifications and approvals

Specifications	EN 60664-1
----------------	------------



Pushing Performance

Specifications and approvals

	IEC 61984
--	-----------

Commercial data

Packaging size	1
Net weight	1.92 g
Country of origin	Germany
European customs tariff number	85366990