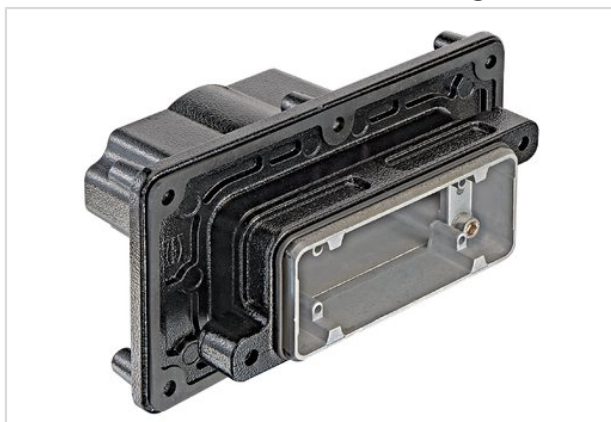


Han 16HPR-PFT housing-M50



| | |
|--------------------|---|
| Part number | 19 40 016 1114 |
| Specification | Han 16HPR-PFT housing-M50 |
| HARTING eCatalogue | https://b2b.harting.com/19400161114 |

Identification

| | |
|-----------------------------|----------------------------|
| Category | Hoods/Housings |
| Series of hoods/housings | Han [®] HPR |
| Type of hood/housing | Panel feed through housing |
| Description of hood/housing | for mounting from inside |

Version

| | |
|----------------------|---|
| Locking type | Screw locking |
| Size | 16 B |
| Version | Top entry |
| Cable entry | 1x M50 |
| Field of application | Hoods/housings for harsh outdoor environments |

Technical characteristics

| | |
|--|--|
| Limiting temperature | -40 ... +125 °C |
| Tightening torque (screw locking) | 4 Nm |
| Tightening torque | 6 Nm Fixing screws |
| Degree of protection acc. to IEC 60529 | IP65 IP68 IP69 / IPX9K acc. to ISO 20653 |
| Type rating acc. to UL 50 / UL 50E | 4 4X 12 |
| Thickness of the panel | ≥2 mm |

Material properties

| | |
|-------------------------|---|
| Material (hood/housing) | Aluminium die-cast Corrosion resistant |
| Surface (hood/housing) | Powder-coated |
| Colour (hood/housing) | RAL 9005 (jet black) |
| Material (seal) | NBR |



Pushing Performance

Material properties

| | |
|-----------------------------|-----------------|
| Material (locking) | Stainless steel |
| RoHS | compliant |
| ELV status | compliant |
| China RoHS | e |
| REACH Annex XVII substances | No |
| REACH ANNEX XIV substances | No |
| REACH SVHC substances | No |

Specifications and approvals

| | |
|-----------|--|
| Approvals | DNV GL |
| UL / CSA | UL 1977 ECBT2.E235076 CSA-C22.2 No. 182.3 ECBT8.E235076 |

Commercial data

| | |
|--------------------------------|------------|
| Packaging size | 1 |
| Net weight | 1,111 g |
| Country of origin | China |
| European customs tariff number | 8538900000 |